



Submittals [WQWebSubmittal](#)

[WQWebSubmittal Home](#)
[WQWebPortal Home](#)
[Help](#)
[FAQs](#)

Annual Report

Number	Permit Section	Question
1	S5.A.3	Attach updated annual Stormwater Management Program Plan (SWMP Plan). (S5.A.3) Saved Document Name: 2017 Wenatchee Valley Stormwat_1_03072017120042
2	S9.D.5	Attach a map and copy of any annexations, incorporations or boundary changes resulting in an increase or decrease in the Permittee's geographic area of permit coverage during the reporting period per S9.D.5. Not Applicable
3	S5.A.4.a.ii	Tracked the estimated costs of implementation of each component of the SWMP. (S5.A.4.a.ii) Yes
4	S5.A.5.b	Coordinated among departments within the jurisdiction to eliminate barriers to permit compliance. (S5.A.5.b) Yes
5	S5.B.1.a and b	Attach description of public education and outreach programs and stewardship activities conducted per S5.B.1.a and b. Saved Document Name: WVSTAC PIP 12-19-2016_5_03072017125117
6	S5.B.2.a	Describe the opportunities created for the public to participate in the decision making processes involving the development, implementation and updates of the Permittee's SWMP. (S5.B.2.a) Saved Document Name: 2016 Public Education and Invo_6_03072017014404
7	S5.B.2.b	Posted the updated SWMP Plan and latest annual report on your website no later than May 31. (S5.B.2.b) Yes
7b	S5.B.2.b	List the website address. www.wenatcheewa.gov/wvstac, www.douglascountywa.net
8	S5.B.3.a	Maintained a map of the MS4 that includes the requirements listed in S5.B.3.a. Yes
9	S5.B.3.b.vi	Implemented a compliance strategy, including informal compliance actions as well as enforcement provisions of the regulatory mechanism described in S5.B.3.b. (S5.B.3.b.vi) Yes
10	S5.B.3.b.vii	Updated, if necessary, the regulatory mechanism to effectively prohibit illicit discharges into the MS4 per S5.B.3.b.vii. (Required, if applicable, no later than February 2, 2019) Not Applicable
11	S5.B.3.c	Implemented procedures for conducting illicit discharge investigations in accordance with S5.B.3.c.

Number	Permit Section	Question
		Yes
12	S5.B.3.c.iii	Percentage of MS4 coverage area screened in reporting year per S5.C.3.c.i. (Required to screen 40% of MS4 no later than December 31, 2018 and 12% on average each year thereafter, S5.B.3.c.iii) 25
13	S5.B.3.c.iv	Publicized a hotline telephone number for public reporting of spills and other illicit discharges. (S5.B.3.c.iv) Yes
13b	S5.B.3.c.iv	List the hotline number. 509-886-3728
14	S5.B.3.c.v	Implemented an ongoing illicit discharge training program for all municipal field staff per S5.B.3.c.v. Yes
15	S5.B.3.c.vi	Informed public employees, businesses, and the general public of hazards associated with illicit discharges and improper disposal of waste. (S5.B.3.c.vi) Yes
15b	S5.B.3.c.vi	Describe actions. Newspaper and Radio PSAs
16	S5.B.3.d	Number of illicit discharges, including illicit connections, eliminated during the reporting period. (S5.B.3.d) 0
17	S5.B.3.d.iv	Attach a summary of actions taken to characterize, trace and eliminate each illicit discharge found by or reported to the permittee. For each illicit discharge, include a description of actions according to required timelines per S5.B.3.d.iv. Not Applicable
18	S5.B.3.e	Implemented an ongoing illicit discharge training program for all staff responsible for implementing the procedures and program, as described in S5.B.3.e. Yes
19	S5.B.4.a	Implemented an ordinance or other regulatory mechanism and enforcement procedures for construction site stormwater runoff control as described in S5.B.4.a. Yes
20	S5.B.4.b	Reviewed Stormwater Site Plans, including construction SWPPPs for all new development and redevelopment projects. S5.B.4.b. Yes
20b	S5.B.4.b	Number of site plans reviewed during the reporting period. 46
21	S5.B.4.c	Implemented procedures for site inspection and enforcement of construction stormwater pollution control measures. (S5.B.4.c) Yes

Number	Permit Section	Question
21b	S5.B.4.c.iii	Number of permitted construction sites inspected during the reporting period. (S5.B.4.c.iii) 26
22	S5.B.4.c	Number of enforcement actions taken during the reporting period based on construction phase inspections at new development and redevelopment projects. (S5.B.4.c) 0
23	S5.B.4.b.ii and S5.B	Trained the staff involved in permitting, plan review, field inspections and enforcement for construction site runoff control. (S5.B.4.b.ii and S5.B.4.c.ii) Yes
24	S5.B.4.d	Provided information to construction site operators and design professionals about training available on how to comply with the requirements in Appendix 1 and the BMPs in the SWMMEW, or an equivalent document. (S5.B.4.d) Yes
24b	S5.B.4.d	Cite website address, if located on your website. www.wenatcheewa.gov/wvstac, www.douglascountywa.net
25	S5.B.4.e	The number of construction sites that provided their intent to apply for the "Erosivity Waiver" as described in (S5.B.4.e). 0
26	S5.B.4.e	The number of complaints investigated about sites that have received an "Erosivity Waiver" and describe any enforcement actions taken as a result. (S5.B.4.e) Not Applicable
27	S5.B.5.a.	Implemented ordinance or other regulatory mechanism and enforcement procedures as described in S5.B.5.a. Yes
31	S5.B.5.b	Implemented procedures for post-construction site plan review. (S5.B.5.b) Yes
32	S5.B.5.c.ii	Inspected post-construction stormwater controls, including structural BMPs, during installation at new development and redevelopment projects. (S5.B.5.c.ii) Yes
32b	S5.B.5.c.ii	Number of sites inspected during the reporting period. (S5.B.5.c.ii) 36
33	S5.B.5.c	Number of enforcement actions taken during the reporting period? (S5.B.5.c) 0
34	S5.B.5.c.iii	Inspected structural BMPs at least once every five years after final installation. (S5.B.5.c.iii) Yes
34b	S5.B.5.c.iii	Number of BMPs inspected during the reporting period. (S5.B.5.c.iii) 0
35	S5.B.5.d	

Number	Permit Section	Question
		Trained the staff involved in permitting, plan review, inspection and enforcement for post-construction stormwater control. (S5.B.5.d) Yes
37	S5.B.6.a	Implemented the schedule of Operation and Maintenance activities for municipal operations. (S5.B.6.a) Yes
38	S5.B.6.a.i (f) and (g)	Have NPDES permit coverage for all applicable Permittee construction projects and industrial facilities. (S5.B.6.a.i (f) and (g)) Yes
39	S5.B.6.a.ii (a)	Inspected stormwater treatment and flow control facilities (except catch basins) owned or operated by the Permittee at least once every two years. (S5.B.6.a.ii (a)) Yes
39b	S5.B.6.a.ii (a)	Number of facilities inspected during the reporting period. (S5.B.6.a.ii (a)) 0
41	S5.B.6.a.ii (b)	If used an alternative to standard schedule for catch basin inspections for all or a portion of the MS4, attach description of the method used. (S5.B.6.a.ii(b)) Not Applicable
42	S5.B.6.a.ii (c)	Conducted spot checks of stormwater facilities after major storms. (S5.B.6.a.ii (c)) Yes
43	S5.B.6.b	Trained the staff with primary construction, operations, or maintenance job functions that are likely to impact stormwater quality. (S5.B.6.b) Yes
44	S7.A	Complied with the Total Maximum Daily Load (TMDL)-specific requirements identified in Appendix 2. (S7.A) Not Applicable
45	S7.A	For TMDLs listed in Appendix 2: Attach a summary of relevant SWMP and Appendix 2 activities to address the applicable TMDL parameter(s). (S7.A) Not Applicable
46	S8.A	Attach a description of any stormwater monitoring or stormwater-related studies as described in S8.A. Not Applicable
47	S8.B	Participated in the regional group to select, develop and conduct effectiveness studies as described in S8.B. Yes
48	G3	Notified Ecology in accordance with G3 of any discharge into or from the Permittees MS4 which could constitute a threat to human health, welfare or the environment. (G3) Not Applicable
49	G3.A	Took appropriate action to correct or minimize the threat to human health, welfare, and/or the environment per G3.A.

Number	Permit Section	Question
Not Applicable		
50	G20	Notified Ecology of the failure to comply with the permit terms and conditions within 30 days of becoming aware of the non-compliance. (G20)
Not Applicable		
51	G20	Number of non-compliance notifications (G20) provided in reporting year.
51b	G20	If applicable, list permit conditions described in non-compliance notification(s).
52	S4.F.3.d	Attach a summary of the status of implementation of any actions taken pursuant to S4.F.3 and the status of any monitoring, assessment, or evaluation efforts conducted during the reporting period. (S4.F.3.d)
Not Applicable		

Attachments:

View Files Attached to Submission

	DocDescr	DocName	DocExt	DocID	SubID	AppName
View	WAR046003_6_03072017014404	2016 Public Education and Invo_6_03072017014404	.pdf	538192	1573803	wqwebportal
View	WAR046003_1_03072017120042	2017 Wenatchee Valley Stormwat_1_03072017120042	.pdf	538133	1573803	wqwebportal
View	Submitted Copy of Record for Douglas County	Copy of Record DouglasCounty Thursday March 30 2017	.pdf	544624	1573803	wqwebportal
View	Submitted Cover Letter for Douglas County	Cover Letter DouglasCounty Thursday March 30 2017	.pdf	544625	1573803	wqwebportal
View	WAR046003_5_03072017125117	WVSTAC PIP 12-19-2016_5_03072017125117	.pdf	538154	1573803	wqwebportal

[Close](#)
[Ecology Home](#) | [WQWebPortal Home](#) | [WQWebSubmittal Home](#) | [Help](#) | [Release Notes](#) | [Contact Us](#)

 Submittals (WQWebSubmittal) Version 1.4.0 | [Data Disclaimer](#) | [Privacy Policy](#)

Copyright © Washington State Department of Ecology 2017. All Rights Reserved.

**2016 Public Education, Outreach Programs and Stewardship Activities
Douglas County**

The Wenatchee Valley Stormwater Management Program was promoted by jurisdiction staff at the following community events and activities in 2016:

- KPQ Home & Garden Show
 - Charity Car Wash Kit Program – *City of Wenatchee*
 - Kids in the Creek (9th through 12th grade)
 - New Dog Owner Kits (Managing Pet Waste) provided to the local Humane Society and veterinary offices.
 - Portable Toilet Handout for contractors and community events
 - Advertisement in the Wenatchee World related to Illicit Discharges
 - Radio PSA : Illicit Discharge
-
- *Don't Drip and Drive* www.wenatcheewa.gov/wvstac
 - *Wenatchee School District's 21st Century Community Learning Center Program (3rd through 5th grade) – City of Wenatchee*

Information was also provided at the Public Services Building at 140 19th Street NW, East Wenatchee and online at www.wenatcheewa.gov/wvstac. In 2016 the Wenatchee Valley Stormwater webpage received 305 hits. Education and outreach items for the Wenatchee Valley Stormwater Management Program were also handed out by Cascadia Conservation District at the Salmon Festival in Leavenworth and the Chelan County Fair.

The local Phase II permittees again provided a survey at the KPQ Home & Garden Show and online through the end of the year.

2017 Wenatchee Valley Stormwater Management Program Plan

The following stormwater activities are regional activities unless otherwise noted. The regional partners include Chelan County, Douglas County, City of East Wenatchee, City of Wenatchee and Wenatchee Valley College.

I. Stormwater Management Program

- a. Update Wenatchee Valley Stormwater Management Program Plan.
- b. Schedule quarterly regional stormwater utility meetings.
- c. Prepare an annual report.

II. Public Education and Outreach

- a. Develop and distribute information to responsible parties for traffic accident cleanup.
- b. Provide car washing education and outreach.
- c. Provide stormwater education and outreach at two public events.
- d. Participate in Wenatchee School District programs. (City of Wenatchee)

III. Public Involvement and Participation

- a. Host annual Wenatchee Valley Stormwater Program Steering Committee meeting.
- b. Post Stormwater Management Program and Plan to regional website.
- c. Provide a stormwater survey on the website and at public events.

IV. Illicit Discharge Detection and Elimination

- a. Provide training to field staff on illicit discharge detection and elimination.

V. Construction Site Stormwater Runoff Control

- a. Participate in the update of the Stormwater Management Manual for Eastern Washington.

VI. Post-Construction Stormwater Management for new Development and Redevelopment

- a. Continue implementation of 5-year operation and maintenance inspections of post-construction stormwater facilities.
- b. Update ordinance to require projects disturbing greater than one acre or more and projects less than one acre that are part of a larger common plan of development or sale, to retain runoff generated from on-site for, at a minimum, the 10-year, 24-hour rainfall event or local equivalent. (City of Wenatchee)

VII. Municipal Operations and Maintenance

- a. Provide spill response training for staff.

VIII. Monitoring and Assessment

- a. Participate in Effectiveness Study effort.

Wenatchee Valley Stormwater Program

Public Involvement, Education And Outreach Plan

Public Involvement, Education and Outreach Plan

In compliance with S5.B.1, S5.B.2, S6.D.1 and S6.D.2 of the Eastern Washington Phase II Municipal Stormwater Permit, the City of Wenatchee, City of East Wenatchee, Douglas County, Chelan County, and Wenatchee Valley College have developed this public involvement, education and outreach plan. This plan is an important element of the local and regional efforts to implement a stormwater management program (SWMP). The purpose of this plan is to outline the public education and involvement process and actions to distribute educational materials to the community about the impacts of stormwater discharges to local water bodies and the steps the public can take to reduce pollutants in stormwater. The permit recommends a multimedia approach and requires that, at a minimum, certain target audiences (e.g., school-age children, general public, and engineers) are informed about various impacts associated with improper stormwater discharges.

1.0 Public Involvement and Participation Plan

The components of the regional public involvement and participation plan are described in this section. Pursuant to the permit, the program requires a process for obtaining and considering public comments on the SWMP, including required ordinances and regulatory mechanisms. The permit requires that the latest updated version of the SWMP plan be made available to the public no later than May 31 each year.

The SWMP public involvement plan has the following general public involvement goals:

- Build understanding of the program and credibility for the process leading to decisions
- Establish and maintain productive partnerships with citizens, agencies, and organizations that have stake in or have shown interest in the program
- Promote early involvement with stakeholders in identifying issues and opportunities
- Provide information to the public, businesses, and the media
- Maintain a record of public involvement in the decision-making process

The public involvement and participation plan complies with applicable State, Tribal, and local public notice requirements for implementing a public involvement and participation program. The SWMP update process will include public involvement opportunities including public hearings, open houses, and the establishment of a steering committee.

The following principles will guide public involvement throughout the SWMP implementation:

- All major public policy decisions or large implementation projects will affect many people
- Good solutions can come from a variety of sources including professionals, elected officials, agencies, citizens, and community organizations
- Even if a project or policy decision is sensible and beneficial, it must be arrived at properly and fairly, involving the community at all appropriate levels to be acceptable
- People are much more willing to support a decision if the decision-making process is open, objective, and considers all viewpoints
- Effective public notification and participation is essential to sound decision-making
- Financial constraints should be reasonably considered in designing public participation programs

1.1 Public Involvement Approach

The SWMP's public involvement goals will be met through a focus on working with the public to build consensus on the program elements and identifying solutions that meet the requirements of the permit and meet the needs of the Wenatchee Valley.

- **Steering Committee:** The WVSTAC will continue to organize the steering committee representing different community interests to provide comments and suggestions during program implementation. This steering committee will provide input into ordinance revisions that will take place throughout the permit period. It is anticipated that members of the steering committee will represent the following interests/organizations:
 - Legislative body members or Planning Commission
 - Home Builders Association
 - Chamber of Commerce
 - Environmental organization
 - Land trust
 - Professional engineers
 - Developers/contractors
 - Citizens or local business (at large)
 - Recreation

The WVSTAC will meet with the steering committee to discuss the updates to the SWMP plan and to provide an opportunity for comments and suggestions. Exhibit 1 shows an organizational chart of the groups involved in the SWMP plan update and implementation process.

- **Public Open House:** An open house may be held to provide information to the public about the SWMP plan updates and as a mechanism to receive public comments.
- **Public Meetings:** Information regarding ordinance revisions will be presented at public meetings such as city council meetings, planning commission meetings, city council workshops, and county commissioner meetings.
- **Public Hearings:** Public hearings will be held prior to the adoption of ordinances and revisions to ordinances required by the permit.

1.1.1 Public Notice

Public notice of open houses and public hearings will be made through local radio stations, newspaper notices (legal and feature articles), news releases, the jurisdiction websites, or other venues as established in existing policies and notification procedures and state and local regulations. Notices may also target specific population sectors, including neighborhood and community groups, outdoor recreation groups, and business and industry groups, as appropriate. Notices will include the date, time, location, and purpose of the event.

1.1.2 Process for Consideration of Public Comments

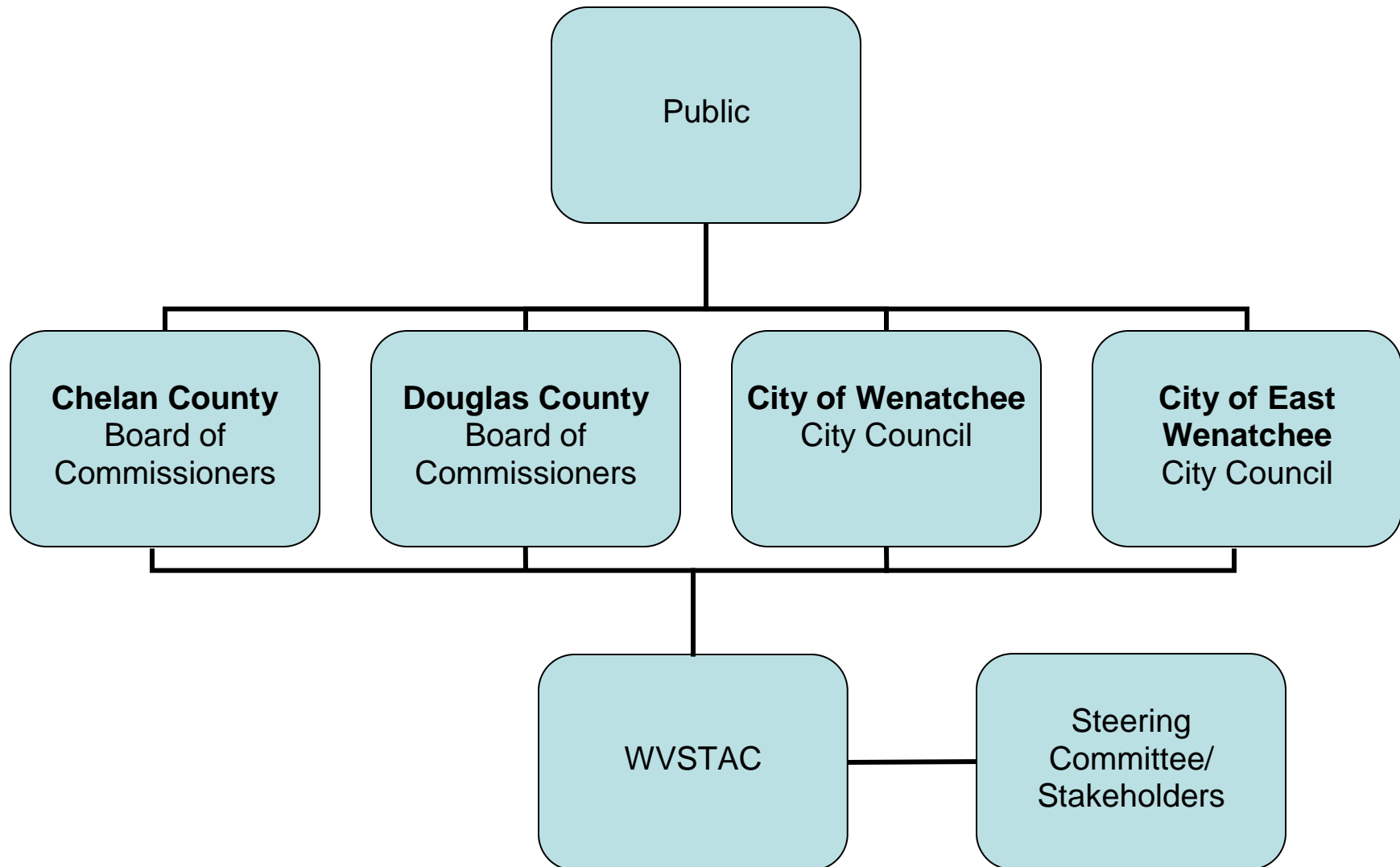
The public will be able to provide comments on the SWMP plan and ordinances at open houses and public hearings, as well as in writing and online through the regional stormwater website: www.wenatcheewa.gov/WVSTAC. All public comments will be considered by the WVSTAC and decision-makers throughout the process.

1.1.3 Public Involvement Schedule

The Cities and Counties will aim to complete the necessary public involvement opportunities for ordinance revisions and SWMP plan updates. The permit requires that the updated SWMP be provided by May 31 every year thereafter throughout the duration of the permit. The process for the annual review and update will consist of an evaluation of the program and opportunities for public input:

- Public input on stormwater in the Wenatchee Valley will be solicited through an annual survey provided at community events and/or on the website
- The WVSTAC will annually review the SWMP and prepare a SWMP plan for the next calendar year. The WVSTAC will present their revisions and recommendations to the steering committee
- The WVSTAC will present their recommendations and updates to their respective commissions and councils as required by the local jurisdiction
- Any proposed SWMP updates will be prepared and made available to the public through the website and at government offices
- The updates will be adopted by each jurisdiction

Exhibit 1
Stormwater Management Program Organizational Chart



2.0 Public Education and Outreach Plan

The objective of the stormwater public education plan is to distribute educational materials to the community or conduct equivalent outreach activities on the impacts of stormwater discharges to water bodies and steps the public can take to reduce pollutants in stormwater. Outreach and educational efforts include a multimedia approach and are targeted to specific audiences for increased effectiveness.

2.1 Components of the Public Education and Outreach Program

The components of the regional public outreach and education program are described in this section. The program will include:

- General public, including school-age children: Importance of improving water quality and protecting beneficial uses of waters of the state; potential impacts from stormwater discharges; methods for avoiding, minimizing, reducing and/or eliminating the adverse impacts of stormwater discharges; and actions individuals can take to improve water quality, including encouraging participation in local environmental stewardship activities and programs.
- Businesses and the general public: Preventing illicit discharges, preventing illicit discharges, including what constitutes illicit discharges, the impacts of illicit discharges, and promoting the proper management and disposal of waste.
- Engineers, construction contractors, developers, development review staff, and land use planners: Technical standards, the development of stormwater site plans and erosion control plans, low impact development when it becomes available, and stormwater best management practices for reducing adverse impacts from stormwater runoff from development sites.
- Tenants and residents of Wenatchee Valley College: Impact of stormwater discharges on receiving waters, and steps that can be taken to reduce pollutants in stormwater runoff.

2.1.1 Identify and Characterize Target Audiences

The NPDES Phase II municipal stormwater permit requires permittees to identify and provide outreach to target audiences. The WVSTAC has developed a list of target audiences, including residents, school-age children, public employees, businesses, industries, construction contractors, and developers. Each City and County will be responsible for communicating to their respective target audiences, except for shared contacts which will be contacted at the regional or semi-regional level to avoid duplicative efforts. The list of target audiences and topics can be found in Attachment A.

2.1.2 WVSTAC Website

The regional website to support public education and outreach efforts will be hosted and maintained by the City of Wenatchee. The website will provide a description of the SWMP, downloadable educational materials such as brochures and information on program activities. Each City and County will have a link to the regional stormwater website on their individual websites, and will be responsible for maintaining these sites. Web address: www.wenatcheewa.gov/WVSTAC

2.1.3 Logo

The Cities and Counties will use the following logo on outreach and education materials:



2.1.4 Media Involvement

The media will be contacted with news stories about the development and implementation of the SWMP. Public access television, public service announcements, and advertisements may also be utilized, as appropriate.

2.1.5 Storm Drain Labeling

The Cities and Counties stencil or imprint “Drains to River” on new and replacement storm drain inlets draining to local water bodies, as applicable. Wenatchee Valley College, as a secondary permittee, is required by the permit label all storm drain inlets owned or operated by the college. The City of Wenatchee may also work with local volunteer groups to install storm drain inlet markers with more specific information.

2.1.6 Educational and Outreach Materials

The Cities and Counties will prepare educational and outreach materials to distribute to target audiences that will accomplish three main goals:

- Educate the public about general stormwater issues
- Educate the public about illicit discharges and best management practices that can prevent them
- Educate the public about what they can do to help reduce stormwater runoff and reduce water pollution

2.1.6.1 General Stormwater Educational and Outreach Materials

Education and outreach materials related to personal stewardship are targeted to all affected Bi-County residents. The intent is to provide the public and businesses with general stormwater information and best management practices that can be implemented to lessen impacts on stormwater runoff. All of the educational materials will be developed regionally and semi-regionally. Materials will be posted on the regional website and also distributed as hard copies, as appropriate. Some educational and outreach materials will also be made available in Spanish, including the general information brochure, construction brochure, and illicit discharge brochures.

General Information/Frequently Asked Questions Brochures

Target Audience: All adults

Content of Message: Explanation of what stormwater is, why stormwater can be a problem, practices that can protect water quality, and practices that should be avoided.

Delivery Mechanism(s): The brochures will be available at City and County offices, at appropriate public events, and as a billing insert. Brochures may also be mailed to customers or available at public events as funding permits. On-hold messages may be another option for providing education.

Stormwater Education Brochure for Construction Sites

Target Audience: Construction contractors and developers

Content of Message: Storm drains discharge to water bodies, stormwater treatment requirements prior to discharge, control of stormwater runoff from construction sites, explanation of the impacts to surface water from stormwater, understanding of stormwater drainage in the regional area.

Delivery Mechanism(s): The brochure will be available on the website and a through the following departments:

- Douglas County Transportation and Land Services Department
- City of East Wenatchee Community Development Department
- Chelan County Community Development Department
- City of Wenatchee Public Works Department

In addition, construction site stormwater runoff information could be provided through direct mailings or at the time construction permits are issued by the local jurisdiction.

Map of the Coverage Area

Target Audience: All adults

Content of Message: A map showing the Eastern Washington Phase II permit coverage area

Delivery Mechanism(s): In addition to the regional website, the map will be available at City and County offices and appropriate public events.

Stormwater Education Programs for School-age Children

The WVSTAC may participate in local events for school-age children, such as Camp Columbia, Kids in the Creek, and the 21st Century Community Learning Center Program. The WVSTAC may also provide educational materials or presentations to schools as funding and staff are available.

Target Audience: Students, Grades K-12

Content of Message: Explanation of what stormwater is, why stormwater can be a problem, practices that can protect water quality, and practices that should be avoided.

Delivery Mechanism(s): Options for curriculum include an updated “Kids in the Creek” curriculum that was previously used in area schools, an interactive presentation, and EPA Water Sourcebooks. Field trips may be planned to view stormwater systems, drainages, and outfalls (if accessible). Posters showing the link between homes, stormwater runoff, and water bodies may be provided to schools for display.

General Stormwater Display

Target Audience: Everyone

Content of Message: The display promotes the Wenatchee Valley Stormwater Program and website, why stormwater can be a problem, practices that can protect water quality, practices that should be avoided.

Delivery Mechanism(s): An Enviroscape watershed model, posters on stormwater pollution prevention, and a WVSTAC banner can be used at public events and meetings. The City of Wenatchee and Douglas County also have portable trade show booths for use at these events. Events may include the local home and garden show, public meetings, county fairs, Salmon Festival, Earth Day, and local youth programs such as Kids in the Creek and Camp Columbia.

2.1.6.2 Illicit Discharge Education and Outreach Materials

Education and outreach materials related to illicit discharges will be available for all residents within the permit coverage area, and specific materials will be made to target homeowners and commercial businesses. The intent is to educate the public about illicit discharges and provide them with a mechanism to report such discharges. For more details on the target audiences and topics, please refer to Attachment A.

Best Management Practices for Illicit Discharges Brochures – Residential Activities

Target Audience: Adult community residents, particularly homeowners

Content of Message: Definition of illicit discharge, typical homeowner actions that result in illicit discharges, best management practices for illicit discharges, especially for washing cars and draining pools; and actions and precautions for those who live along drainage areas. The brochures will provide the regional call numbers for residents to report illicit discharges.

Delivery Mechanism(s): Brochures may be distributed as a utility bill insert as well as at appropriate public events. Direct mailings and on-hold messages may also be used.

Commercial Business Brochure addressing Illicit Discharges

Target Audience: Commercial businesses

Content of Message: What illicit discharges are, general best management practices for illicit discharges, and how to report discharges. Specific best management practices for commercial properties and industrial operations will also be provided in the brochure.

Delivery Mechanism(s): Brochure will be delivered to businesses along with their renewal license information, and during site visits. The brochures will also be available at City and County offices.



Water Quality Program

Permit Submittal Electronic Certification

Permittee: Douglas County MSW

Permit Number: WAR046003

Site Address: 203 RAINIER
Waterville, WA 98858

Submittal Name: MS4 Annual Report Phase II Eastern

Version: 1

Due Date: 3/31/2017

Questionnaire

Number	Permit Section	Question	Answer
1	S5.A.3	Attach updated annual Stormwater Management Program Plan (SWMP Plan). (S5.A.3)	2017 Wenatchee Valley Stormwat_1_03072017120042
2	S9.D.5	Attach a map and copy of any annexations, incorporations or boundary changes resulting in an increase or decrease in the Permittee's geographic area of permit coverage during the reporting period per S9.D.5.	Not Applicable
3	S5.A.4.a.ii	Tracked the estimated costs of implementation of each component of the SWMP. (S5.A.4.a.ii)	Yes
4	S5.A.5.b	Coordinated among departments within the jurisdiction to eliminate barriers to permit compliance. (S5.A.5.b)	Yes
5	S5.B.1.a and b	Attach description of public education and outreach programs and stewardship activities conducted per S5.B.1.a and b.	WVSTAC PIP 12-19-2016_5_03072017125117
6	S5.B.2.a	Describe the opportunities created for the public to participate in the decision making processes involving the development, implementation and updates of the Permittee's SWMP. (S5.B.2.a)	2016 Public Education and Invo_6_03072017014404
7	S5.B.2.b	Posted the updated SWMP Plan and latest annual report on your website no later than May 31. (S5.B.2.b)	Yes
7b	S5.B.2.b	List the website address.	www.wenatcheewa.gov/wvstac, www.douglascountywa.net
8	S5.B.3.a	Maintained a map of the MS4 that includes the requirements listed in S5.B.3.a.	Yes
9	S5.B.3.b.vi	Implemented a compliance strategy, including informal compliance actions as well as enforcement provisions of the regulatory mechanism described in S5.B.3.b. (S5.B.3.b.vi)	Yes
10	S5.B.3.b.vii	Updated, if necessary, the regulatory mechanism to effectively prohibit illicit discharges into the MS4 per S5.B.3.b.vii. (Required, if applicable, no later than February 2, 2019)	Not Applicable

11	S5.B.3.c	Implemented procedures for conducting illicit discharge investigations in accordance with S5.B.3.c.	Yes
12	S5.B.3.c.iii	Percentage of MS4 coverage area screened in reporting year per S5.C.3.c.i. (Required to screen 40% of MS4 no later than December 31, 2018 and 12% on average each year thereafter, S5.B.3.c.iii)	25
13	S5.B.3.c.iv	Publicized a hotline telephone number for public reporting of spills and other illicit discharges. (S5.B.3.c.iv)	Yes
13b	S5.B.3.c.iv	List the hotline number.	509-886-3728
14	S5.B.3.c.v	Implemented an ongoing illicit discharge training program for all municipal field staff per S5.B.3.c.v.	Yes
15	S5.B.3.c.vi	Informed public employees, businesses, and the general public of hazards associated with illicit discharges and improper disposal of waste. (S5.B.3.c.vi)	Yes
15b	S5.B.3.c.vi	Describe actions.	Newspaper and Radio PSAs
16	S5.B.3.d	Number of illicit discharges, including illicit connections, eliminated during the reporting period. (S5.B.3.d)	0
17	S5.B.3.d.iv	Attach a summary of actions taken to characterize, trace and eliminate each illicit discharge found by or reported to the permittee. For each illicit discharge, include a description of actions according to required timelines per S5.B.3.d.iv.	Not Applicable
18	S5.B.3.e	Implemented an ongoing illicit discharge training program for all staff responsible for implementing the procedures and program, as described in S5.B.3.e.	Yes
19	S5.B.4.a	Implemented an ordinance or other regulatory mechanism and enforcement procedures for construction site stormwater runoff control as described in S5.B.4.a.	Yes
20	S5.B.4.b	Reviewed Stormwater Site Plans, including construction SWPPPs for all new development and redevelopment projects. S5.B.4.b.	Yes
20b	S5.B.4.b	Number of site plans reviewed during the reporting period.	46
21	S5.B.4.c	Implemented procedures for site inspection and enforcement of construction stormwater pollution control measures. (S5.B.4.c)	Yes
21b	S5.B.4.c.iii	Number of permitted construction sites inspected during the reporting period, (S5.B.4.c.iii)	26
22	S5.B.4.c	Number of enforcement actions taken during the reporting period based on construction phase inspections at new development and redevelopment projects. (S5.B.4.c)	0
23	S5.B.4.b.ii and S5.B	Trained the staff involved in permitting, plan review, field inspections and enforcement for construction site runoff control. (S5.B.4.b.ii and S5.B.4.c.ii)	Yes

24	S5.B.4.d	Provided information to construction site operators and design professionals about training available on how to comply with the requirements in Appendix 1 and the BMPs in the SWMMEW, or an equivalent document. (S5.B.4.d)	Yes
24b	S5.B.4.d	Cite website address, if located on your website.	www.wenatcheewa.gov/wvstac , www.douglascountywa.net
25	S5.B.4.e	The number of construction sites that provided their intent to apply for the "Erosivity Waiver" as described in (S5.B.4.e).	0
26	S5.B.4.e	The number of complaints investigated about sites that have received an "Erosivity Waiver" and describe any enforcement actions taken as a result. (S5.B.4.e)	Not Applicable
27	S5.B.5.a.	Implemented ordinance or other regulatory mechanism and enforcement procedures as described in S5.B.5.a.	Yes
31	S5.B.5.b	Implemented procedures for post-construction site plan review. (S5.B.5.b)	Yes
32	S5.B.5.c.ii	Inspected post-construction stormwater controls, including structural BMPs, during installation at new development and redevelopment projects. (S5.B.5.c.ii)	Yes
32b	S5.B.5.c.ii	Number of sites inspected during the reporting period. (S5.B.5.c.ii)	36
33	S5.B.5.c	Number of enforcement actions taken during the reporting period? (S5.B.5.c)	0
34	S5.B.5.c.iii	Inspected structural BMPs at least once every five years after final installation. (S5.B.5.c.iii)	Yes
34b	S5.B.5.c.iii	Number of BMPs inspected during the reporting period. (S5.B.5.c.iii)	0
35	S5.B.5.d	Trained the staff involved in permitting, plan review, inspection and enforcement for post-construction stormwater control. (S5.B.5.d)	Yes
37	S5.B.6.a	Implemented the schedule of Operation and Maintenance activities for municipal operations. (S5.B.6.a)	Yes
38	S5.B.6.a.i (f) and (Have NPDES permit coverage for all applicable Permittee construction projects and industrial facilities. (S5.B.6.a.i (f) and (g))	Yes
39	S5.B.6.a.ii (a)	Inspected stormwater treatment and flow control facilities (except catch basins) owned or operated by the Permittee at least once every two years. (S5.B.6.a.ii (a))	Yes
39b	S5.B.6.a.ii (a)	Number of facilities inspected during the reporting period. (S5.B.6.a.ii (a))	0
41	S5.B.6.a.ii (b)	If used an alternative to standard schedule for catch basin inspections for all or a portion of the MS4, attach description of the method used. (S5.B.6.a.ii(b))	Not Applicable
42	S5.B.6.a.ii(c)	Conducted spot checks of stormwater facilities after major storms. (S5.B.6.a.ii (c))	Yes

43	S5.B.6.b	Trained the staff with primary construction, operations, or maintenance job functions that are likely to impact stormwater quality. (S5.B.6.b)	Yes
44	S7.A	Complied with the Total Maximum Daily Load (TMDL)-specific requirements identified in Appendix 2. (S7.A)	Not Applicable
45	S7.A	For TMDLs listed in Appendix 2: Attach a summary of relevant SWMP and Appendix 2 activities to address the applicable TMDL parameter(s). (S7.A)	Not Applicable
46	S8.A	Attach a description of any stormwater monitoring or stormwater-related studies as described in S8.A.	Not Applicable
47	S8.B	Participated in the regional group to select, develop and conduct effectiveness studies as described in S8.B.	Yes
48	G3	Notified Ecology in accordance with G3 of any discharge into or from the Permittees MS4 which could constitute a threat to human health, welfare or the environment. (G3)	Not Applicable
49	G3.A	Took appropriate action to correct or minimize the threat to human health, welfare, and/or the environment per G3.A.	Not Applicable
50	G20	Notified Ecology of the failure to comply with the permit terms and conditions within 30 days of becoming aware of the non-compliance. (G20)	Not Applicable
51	G20	Number of non-compliance notifications (G20) provided in reporting year.	
51b	G20	If applicable, list permit conditions described in non-compliance notification(s).	
52	S4.F.3.d	Attach a summary of the status of implementation of any actions taken pursuant to S4.F.3 and the status of any monitoring, assessment, or evaluation efforts conducted during the reporting period. (S4.F.3.d)	Not Applicable

I certify under penalty of law, that this document and all attachments were prepared under my direction or supervision in accordance with a system designed to assure that qualified personnel properly gather and evaluate the information submitted. Based on my inquiry of the person or persons who manage the system or those persons directly responsible for gathering information, the information submitted is, to the best of my knowledge and belief, true, accurate, and complete. I am aware that there are significant penalties for submitting false information, including the possibility of fine and imprisonment for knowing violations.

Jennifer Lange

3/30/2017 6:17:52 PM

Signature

Date

Washington Department of Ecology Submission Cover Letter

**WQWebSubmittal - Submittal Submission Id: 1573803 - 3/30/2017
6:17:53 PM**

Report Received Dated:

3/30/2017 6:17:53 PM

Company Name	Signer Name	System Name
Douglas County	Jennifer Lange	WQWebPortal

Attachments:

Document Name of Description	Document File Name
WAR046003_6_03072017014404	2016 Public Education and Invo_6_03072017014404
WAR046003_5_03072017125117	WVSTAC PIP 12-19-2016_5_03072017125117
Submitted Copy of Record for Douglas County	Copy of Record DouglasCounty Thursday March 30 2017
WAR046003_1_03072017120042	2017 Wenatchee Valley Stormwat_1_03072017120042

Attestation Agreed to at Signing:

I certify I personally signed and submitted to the Department of Ecology an Electronic Signature Agreement. I understand that use of my electronic signature account/password to submit this information is equal to my written signature. I have read and followed all the rules of use in my Electronic Signature Agreement. I believe no one but me has had access to my password and other account information.

I further certify: I had the opportunity to review the content or meaning of the submittal before signing it; and to the best of my knowledge and belief, the information submitted is true, accurate, and complete. I intend to submit this information as part of the implementation, oversight, and enforcement of a federal environmental program. I am aware there are significant penalties for submitting false information, including possible fines and imprisonment.

**For Ecology Use Only ---
Dev**



I0Sjld5Iukl9GOzyjpA1AAAtqbYMd
+aC4v6c1P5gv5XQANvgVWfzKeKhBDaQ/C8rwVff09nsCCPdc5gQuZic3JQQXHT/eqU1/+totqbA5Y=