

SAMPLE BALLOT

February 8, 2011 Special Election

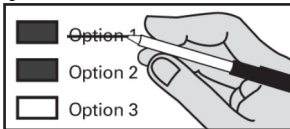
Instructions

How to vote



Use a dark blue or black ink pen to completely fill in the box to the left of your choice. Vote for one in each race. If you vote for more than one, no votes will be counted for that race.

If you make a mistake



Draw a line through the entire measure response or candidate's name. Then you may make another choice.

Cashmere School District No. 222

PROPOSITION 1
CASHMERE SCHOOL DISTRICT NO. 222
REPLACEMENT MAINTENANCE AND OPERATION LEVY

The Board of Directors of Cashmere School District No. 222 adopted Resolution No. 2010-9, concerning a proposition to finance maintenance and operation expenses. This proposition would authorize the District to levy the following excess taxes, in place of an expiring levy, on all taxable property within the District, for support of the District's General Fund educational maintenance and operation expenses:

Collection Year	Approximate Levy Rate/\$1,000 Assessed Value	Levy Amount
2012	\$3.79	\$2,341,000
2013	\$3.86	\$2,404,400
2014	\$3.93	\$2,501,572

all as provided in Resolution No. 2010-9. Should this proposition be approved?
 LEVY ... YES LEVY ... NO

PROPOSITION 2
CASHMERE SCHOOL DISTRICT NO. 222
CAPITAL LEVY FOR CRITICAL SAFETY IMPROVEMENTS

The Board of Directors of Cashmere School District No. 222 adopted Resolution No. 2010-10, concerning a proposition to finance critical safety improvements. This proposition would authorize the District to acquire, construct and install new grandstands/bleachers at the Cashmere High School Stadium, and levy the following excess taxes on all taxable property within the District:

Collection Year	Approximate Levy Rate/\$1,000 Assessed Value	Levy Amount
2012	\$0.16	\$100,000
2013	\$0.16	\$100,000
2014	\$0.16	\$100,000
2015	\$0.15	\$100,000
2016	\$0.15	\$100,000
2017	\$0.15	\$100,000

all as provided in Resolution No. 2010-10. Should this proposition be approved?
 LEVY ... YES LEVY ... NO

Cascade School District No. 228

PROPOSITION 1
CASCADE SCHOOL DISTRICT NO. 228
REPLACEMENT MAINTENANCE AND OPERATION LEVY

The Board of Directors of Cascade School District No. 228 adopted Resolution No. 10/11-7, concerning a proposition to finance maintenance and operation expenses. This proposition would authorize the District to levy the following excess taxes, in place of an expiring levy, upon all taxable property within the District, for support of the District's General Fund educational maintenance and operation expenses:

Collection Year	Approximate Levy Rate/\$1,000 Assessed Value	Levy Amount
2012	\$1.17	\$2,427,449
2013	\$1.15	\$2,427,366

all as provided in Resolution No. 10/11-7. Should this proposition be approved?
 LEVY ... YES LEVY ... NO

PROPOSITION 2
CASCADE SCHOOL DISTRICT NO. 228
BONDS TO CONSTRUCT AND IMPROVE SCHOOL FACILITIES

The Board of Directors of Cascade School District No. 228 adopted Resolution No. 10/11-8, concerning a proposition to finance construction and improvement of school facilities. This proposition would authorize the District to construct a new Cascade High School, make health, safety and infrastructure improvements to Peshastin-Dryden, Osborn, Icicle River and Beaver Valley Schools, refinance an outstanding bond, improve athletic facilities, construct a new maintenance/storage shop and redevelop Discovery School; issue no more than \$46,400,000 of general obligation bonds maturing within 20 years; and levy annual excess property taxes to repay the bonds, all as provided in Resolution No. 10/11-8. Should this proposition be:

Approved Rejected

Lake Chelan School District No. 129

LAKE CHELAN SCHOOL DISTRICT NO. 129
REPLACEMENT MAINTENANCE AND OPERATION LEVY

The Board of Directors of Lake Chelan School District No. 129 adopted Resolution No. 10-06, concerning a proposition to finance maintenance and operation expenses. This proposition would authorize the District to levy the following excess taxes, in place of an expiring levy, on all taxable property within the District, for support of the District's General Fund educational maintenance and operation expenses:

Collection Year	Approximate Levy Rate/\$1,000 Assessed Value	Levy Amount
2012	\$1.45	\$2,740,740
2013	\$1.48	\$2,809,259
2014	\$1.53	\$2,893,537

all as provided in Resolution No.10-06. Should this proposition be approved?
 LEVY ... YES LEVY ... NO

Manson School District No. 19

MANSON SCHOOL DISTRICT NO. 19
REPLACEMENT MAINTENANCE AND OPERATION LEVY

The Board of Directors of Manson School District No. 19 adopted Resolution No. 12-16-10A, concerning a proposition to finance maintenance and operation expenses. This proposition would authorize the District to levy the following excess taxes, in place of an expiring levy, on all taxable property within the District, for support of the District's General Fund educational maintenance and operation expenses:

Collection Year	Approximate Levy Rate/\$1,000 Assessed Value	Levy Amount
2012	\$1.61	\$1,075,125
2013	\$1.66	\$1,107,379

all as provided in Resolution No. 12-16-10A. Should this proposition be approved?
 LEVY ... YES LEVY ... NO

Manson Parks & Recreation District

Shall the Manson Parks and Recreation District be authorized to impose regular property tax levies of \$.23 or less per thousand dollars of assessed valuation for each of three consecutive years?

Levy YES Levy NO

Proposition No. 1

Ballot Title

REPLACEMENT MAINTENANCE AND OPERATION LEVY

The Board of Directors of Ephrata School District No. 165-55-J adopted Resolution 2010-11-09, concerning a proposition to finance maintenance and operation expenses. This proposition would authorize the District to levy the following excess taxes, in place of an expiring levy, upon all taxable property within the District, for support of the District's educational maintenance and operation expenses:

Collection Year	Approximate Levy Rate Per \$1000 Assessed Value	Levy Amount
2012	\$4.75	\$3,450,000
2013	\$4.75	
2014	\$4.75	
2015	\$4.75	\$3,775,000

All as provided in Resolution No. 2010-11-09 Should this proposition be approved?

Written By The Board Of Directors of Ephrata School Dist. No. 165-55-J

Proposition No. 1

Ballot Title

REPLACEMENT MAINTENANCE AND OPERATION LEVY

"To replace an expiring maintenance and operation levy, shall Quincy School District No. 144-101 levy the following excess taxes upon all taxable property within the District?"

Collection Year	Approximate Levy Rate	Levy Amount
2012	\$2.95	\$5,949,654
2013	\$3.00	\$6,334,535
2014	\$3.05	\$7,174,920
2015	\$3.05	\$7,748,913

All as provided in Resolution #04-11. Should this proposition be approved?

Written By The Board Of Directors of Quincy School District # 144-101-J

Proposition No. 1

Ballot Title

**REPLACEMENT MAINTENANCE AND OPERATION
LEVY**

To meet the educational need of students in the Grand Coulee Dam School District No. 301-J, shall the Grand Coulee Dam School District No. 301-J levy the following excess taxes for the purpose of replacing an expiring levy, for the General Fund essential education expenses, maintenance and operation expenses on all taxable property within the district?

Collection Year	Approximate Levy
Rate	Levy Amount
Value	Per \$1,000 Assessed
2012	
\$4.37	\$1,113,410
2013	
\$4.37	\$1,113,410
2014	
\$4.37	\$1,113,410
2015	
\$4.37	\$1,113,410

All as provided in Resolution No. 10/11-1. Should this proposition be approved?