

12000010100011

Sample Ballot

100000017165

Instructions

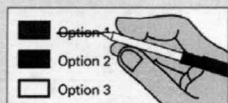
How to vote



Use a dark blue or black ink pen to completely fill in the box to the left of your choice.

Vote for one in each race. If you vote for more than one, no votes will be counted for that race.

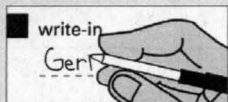
If you make a mistake



Draw a line through the entire measure response or candidate's name.

Then you may make another choice.

Optional write-in



To vote for a candidate not listed for that race, fill in the box to the left of "write-in" and print the name on the dashed line.

Who donates to campaigns?
View contributors for candidates and measures
Public Disclosure Commission
www.pdc.wa.gov
Toll Free (877) 601-2828

Initiatives to the Legislature

Initiative Measure No. 517

Initiative Measure No. 517 concerns initiative and referendum measures. This measure would set penalties for interfering with or retaliating against signature-gatherers and petition-signers; require that all measures receiving sufficient signatures appear on the ballot; and extend time for gathering initiative petition signatures.

Should this measure be enacted into law?

Yes

No

Initiative Measure No. 522

Initiative Measure No. 522 concerns labeling of genetically-engineered foods. This measure would require most raw agricultural commodities, processed foods, and seeds and seed stocks, if produced using genetic engineering, as defined, to be labeled as genetically engineered when offered for retail sale.

Should this measure be enacted into law?

Yes

No

Advisory Votes

**Advisory Vote No. 3
Substitute Senate Bill 5444**

The legislature eliminated, without a vote of the people, a leasehold excise tax credit for taxpayers who lease publicly-owned property, costing approximately \$2,000,000 in the first ten years, for government spending.

This tax increase should be:

Repealed

Maintained

**Advisory Vote No. 4
Senate Bill 5627**

The legislature imposed, without a vote of the people, an aircraft excise tax on commuter air carriers in lieu of property tax, costing approximately \$500,000 in its first ten years, for government spending.

This tax increase should be:

Repealed

Maintained

**Advisory Vote No. 5
Engrossed Substitute House Bill 1846**

The legislature extended, without a vote of the people, the insurance premium tax to some insurance for pediatric oral services, costing an amount that cannot currently be estimated, for government spending.

This tax increase should be:

Repealed

Maintained

**Advisory Vote No. 6
Second Engrossed Second Substitute House Bill 1971**

The legislature eliminated, without a vote of the people, a retail sales tax exemption for certain telephone and telecommunications services, costing approximately \$397,000,000 in the first ten years, for government spending.

This tax increase should be:

Repealed

Maintained

**Advisory Vote No. 7
Engrossed House Bill 2075**

The legislature extended, without a vote of the people, estate tax on certain property transfers and increased rates for estates over \$4,000,000, costing approximately \$478,000,000 in the first ten years, for government spending.

This tax increase should be:

Repealed

Maintained

County: Nonpartisan Offices

Port

**Port Countywide
Commissioner District 1**

Jim Huffman

Write-in

Parks & Recreation District

**Eastmont Metro Park
Commissioner #2**

Thomas Kutrich

Write-in

**Coulee Area Park and
Recreation District
Commissioner Pos. 5**

Michael Bjorklund

Write-in

Water District

**East Wenatchee Water
Commissioner #3**

Delvin "Del" Schorzman

Terry Barnes

Write-in

Hospital District

**Hospital District #1
Commissioner Position 2
2 Year Unexpired Term**

Jerry R. Tretwold

Write-in

**Hospital District #1
Commissioner Position 3
6 Year Short and Full Term**

Mike Pruett

Write-in

**Hospital District #1
Commissioner Position 4**

Cheryl Thomas

Write-in

Sample Ballot

0503031137

Vote Both Sides

Precinct
Sample

Sample Ballot
General Election
Douglas County, Washington
November 05, 2013

12000010200018

Sample Ballot

100000017262

**Hospital District #2
Special Election
Hospital District One Year
Excess Levy**

The Douglas County Hospital District #2 (medical and ambulance services) Board of Commissioners adopted Resolution #65 on July 17, 2013 containing a proposition to finance maintenance and operation. This proposition would authorize the district to levy excess taxes upon all taxable property within the district in the sum of \$65,000.00, requiring collection of approximately \$0.40 per thousand of assessed valuation in 2014.

Should this proposition be approved?

Yes

No

**Hospital District #2
Commissioner #3**

Katie L Shafer

Write-in

**Grant County Hospital District #6
Hospital Commissioner #1**

Steven (Ray) Clover

Kristan Hare

Write-in

**Grant County Hospital District #6
Hospital Commissioner #3
4 Year Unexpired Term**

Gerry L Salstrom

Jerry L Kennedy

Write-in

**Grant County Hospital District #6
Hospital Commissioner #5
6 Year Short and Full Term**

Diane Larson

Betty Brueske

Write-in

School District

**Lake Chelan School District #129
School Board Member District #1**

Siri Tift

Write-in

**Lake Chelan School District #129
School Board Member District #3**

Ken Brunner

Write-in

**Orondo School District #13
Director #1**

Pat Brandt

Write-in

**Orondo School District #13
Director #2**

Janice Merriman

Write-in

**Bridgeport School District #75
Director #2 at Large**

Richard Halterman

Write-in

**Bridgeport School District #75
Director #5**

Tracy Zahn

Write-in

**Brewster School District # 111
Director Position 2
2 Year Unexpired Term**

Hector D. Aparicio

Write-in

**Brewster School District #111
Director Position 3**

Dana Divis

Write-in

**Brewster School District #111
Director Position 5**

Mario Camacho

Write-in

**Quincy School District #144
School Director #1**

Tricia C. Lubach

Write-in

**Quincy School District #144
School Director #5 At Large**

Alex Ybarra

Write-in

**Coulee Hartline School District #151
School Director #1**

Dean J Thompson

Write-in

**Coulee Hartline School District #151
School Director #3**

Kim Jorgensen

Write-in

**Coulee Hartline School District #151
School Director #5**

William H. Murray

Write-in

**Ephrata School District #165
School Director #3**

Mark Sieverkropp

Write-in

**Ephrata School District #165
School Director #5**

Alan J Key

Write-in

**Eastmont School District #206
Director #3**

Annette Eggers

Write-in

**Eastmont School District #206
Director #4 at Large**

Jan Cetto

Dennis Wallgren

William Armes

Write-in

**Mansfield School District #207
Director #1**

Tara Tupling

Write-in

**Mansfield School District #207
Director #2**

Cory Moore

Write-in

**Mansfield School District #207
Director #3
2 Year Unexpired Term**

Jesse Shafer

Write-in

**Mansfield School District #207
Director #5**

Brad A. Murison

Write-in

Sample Ballot

0503031137

Sample Ballot
General Election
Douglas County, Washington
November 05, 2013

22000010300010

Sample Ballot

100000017165

Waterville School District #209 Director #3 <input type="checkbox"/> Gordon Edgar <input type="checkbox"/> Write-in	Town of Coulee Dam Mayor <input type="checkbox"/> F. Gregory (Greg) Wilder <input type="checkbox"/> Gayland (Quincy) Snow	Town of Mansfield Council Position 2 <input type="checkbox"/> Jason Moore <input type="checkbox"/> Adam Foged <input type="checkbox"/> Write-in	Town of Waterville Councilperson #3 2 Year Unexpired Term <input type="checkbox"/> G. Wayne Hawks <input type="checkbox"/> Write-in
Waterville School District #209 Director #4 <input type="checkbox"/> Dale L. Snyder <input type="checkbox"/> Write-in	Town of Coulee Dam Council Position 1 <input type="checkbox"/> Robert (Bob) Poch <input type="checkbox"/> Write-in	Town of Mansfield Council Position 4 <input type="checkbox"/> Ken Peters <input type="checkbox"/> Write-in	Town of Waterville Councilperson #4 2 Year Unexpired Term <input type="checkbox"/> Charles Driver <input type="checkbox"/> Write-in
Grand Coulee School District #301 School Director #1 <input type="checkbox"/> Carla Bierle Marconi <input type="checkbox"/> Write-in	Town of Coulee Dam Council Position 2 <input type="checkbox"/> Karl Hjorten <input type="checkbox"/> Gayle Swagerty <input type="checkbox"/> Write-in	City of Rock Island Council Position 2 <input type="checkbox"/> Doug Shirk <input type="checkbox"/> Write-in	Fire District Fire District #1 Commissioner #3 <input type="checkbox"/> Hubert Bourton <input type="checkbox"/> Write-in
Grand Coulee School District #301 School Director #2 <input type="checkbox"/> Kenneth Butch Stanger <input type="checkbox"/> Write-in	Town of Coulee Dam Council Position 3 <input type="checkbox"/> Duane Johnson <input type="checkbox"/> Andrew Trader <input type="checkbox"/> Write-in	City of Rock Island Councilperson #4 <input type="checkbox"/> Mariah Kreider <input type="checkbox"/> Brad Hampton <input type="checkbox"/> Write-in	Fire District #2 Commissioner #3 <input type="checkbox"/> Bob Black <input type="checkbox"/> Write-in
Local Issues City of Bridgeport Council Position 1 <input type="checkbox"/> Michael Knox <input type="checkbox"/> Matthew Schuh <input type="checkbox"/> Write-in	City of East Wenatchee Council Position 3 <input type="checkbox"/> Chuck Johnson <input type="checkbox"/> Write-in	City of Rock Island Councilperson #5 2 Year Unexpired Term <input type="checkbox"/> Randy Agnew <input type="checkbox"/> Write-in	Fire District #4 Commissioner #2 <input type="checkbox"/> David V. Marden <input type="checkbox"/> Write-in
City of Bridgeport Council Position 2 <input type="checkbox"/> Eric J Schmidt <input type="checkbox"/> Write-in	City of East Wenatchee Council Position 4 <input type="checkbox"/> George J. Buckner <input type="checkbox"/> Write-in	Town of Waterville Councilperson #1 <input type="checkbox"/> Brian Munson <input type="checkbox"/> Write-in	Fire District #5 Commissioner #2 <input type="checkbox"/> Tom Pinger <input type="checkbox"/> Write-in
City of Bridgeport Council Position 3 <input type="checkbox"/> Jacqueline (Jackie) Hentges <input type="checkbox"/> Write-in	City of East Wenatchee Council Position 7 <input type="checkbox"/> Dan Sutton <input type="checkbox"/> Wayne "Barney" Barnhart <input type="checkbox"/> Write-in	Town of Waterville Councilperson #2 <input type="checkbox"/> Edward L. Worthen <input type="checkbox"/> Write-in	Douglas-Okanogan Fire District #15 Commissioner Position 3 <input type="checkbox"/> Lonnie W. Fenton <input type="checkbox"/> Write-in

Sample Ballot

0503031137

Sample Ballot
General Election
Douglas County, Washington
November 05, 2013

Sewer District

Sewer District #1
Sewer Commissioner #2

Mike McCourt

Write-in

Sewer District #1
Sewer Commissioner #3

2 Year Unexpired Term

Cheryl Sutton

Write-in

Cemetery District

Douglas County Cemetery
District #2
One Year Maintenance and
Operations Excess Tax Levy

The Douglas County Cemetery
District No. 2 Board of
Commissioners adopted Resolution
#2013/001 on August 5, 2013,
containing a proposition to finance
maintenance and operations. This
proposition would authorize the
district to levy excess taxes upon all
taxable property within the district in
the amount of \$40,000, requiring
collection of approximately \$0.30 per
\$1,000 of assessed valuation in 2014.

Should this proposition be approved?

Yes

No

Sample Ballot

Sample Ballot

100000017262

0503031137