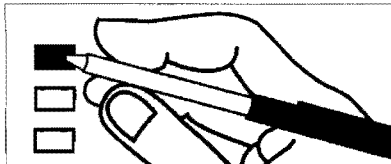


### Instructions

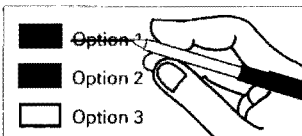
#### How to vote



Use a dark blue or black ink pen to completely fill in the box to the left of your choice.

Vote for one in each race. If you vote for more than one, no votes will be counted for that race.

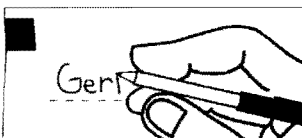
#### If you make a mistake



Draw a line through the entire measure response or candidate's name.

Then you may make another choice.

#### Optional write-in



To vote for a candidate not listed for that race, fill in the box to the left of the dashed line and print the name of the candidate.

### Hospital District

Public Hospital District No. 1  
Okanogan and Douglas Counties, Washington

SPECIAL ELECTION - PROPOSITION 1  
LEVY LID LIFT FOR OPERATIONS AND MAINTENANCE

The Commission of Public Hospital District No. 1 Okanogan and Douglas Counties, Washington (Okanogan Douglas District Hospital) adopted Resolution No. 1-2011 concerning a proposition to increase the District's regular property tax levy. This proposition would authorize the District to increase its regular property tax levy to a dollar rate of not to exceed \$0.63 per \$1,000 of assessed value for collection in 2012 (\$0.35 increase over the 2011 rate) to pay the District's operations and maintenance expenses for health care facilities and services. The 2012 levy amount will be used to calculate subsequent levy limits.

Should this proposition be:

- Approved \_\_\_\_\_
- Rejected \_\_\_\_\_

### Non-Partisan Office

CITY OF BRIDGEPORT COUNCILPERSON #5

4 Year Term  
Vote for One

- June Price \_\_\_\_\_
- Kate McPherson \_\_\_\_\_
- Neil E. Jacobson \_\_\_\_\_
- Write-in \_\_\_\_\_
- 

10000040100077

300001294160

0613031174