

Douglas County Official Local
Voters' Pamphlet

August 3, 2021 Primary Election



Message from the Auditor

Dear voters,

I am pleased to present our first Primary Election Local Voter’s Pamphlet! State law now requires each county to produce a local voter’s pamphlet for every election.

This pamphlet is a guide designed as a reference tool to help you make informed decisions. Inside you will find useful information about voter registration, deadlines for returning your ballot and ballot drop box locations. This pamphlet also includes candidate statements and for and against committee statements for ballot measures. We do not make edits or corrections to those statements.

I would like to take this opportunity to remind you that your vote counts and participation matters. Voting is an important opportunity to elect public servants of your choice and to help decide how tax dollars are spent. The freedom to vote has been secured and preserved by men and women who were willing to fight and sacrifice their lives for the right to be heard; this should not be taken lightly or for granted. Remember, your vote is your voice!

Sincerely,

Thad Duvall
Douglas County Auditor



Contents

- Accessible Voting3
- Register to Vote.....3
- Replacement Ballots3
- Returning Your Ballot.....3
- Additional Voting Information.....4
- Important Dates5
- Douglas County Elections Contact Info.....7
- Measures.....10
- Candidates.....12

Local Jurisdictions Participating in this Election:

Hospital District #1, Bridgeport School District, Eastmont School District, , Lake Chelan School District, Quincy School District, Town of Mansfield

Accessible Voting



Douglas County voters with disabilities have the option of casting their ballot independently using an Accessible Voting Unit (AVU).

AVU's are available in the Auditor's Office starting 18 days before Election Day, until 8p.m. on Election Day. AVU's are wheelchair accessible, screened from other voters to maintain privacy, and can be outfitted with headphones or sip and puff tools.

If you have questions or concerns regarding accessibility, please contact the Douglas County Elections Office at 509-888-6402.

Register to Vote



Register in person until 8pm on Elections Day. But why wait? Update your registration today.

Log on to www.VoteWA.gov to get started. You can register to vote in person at the Douglas County Courthouse in Waterville until 8 p.m. on Election Day. For questions call 509-888-6402 or email at elections@co.douglas.wa.us

Replacement Ballots

If you lost, damaged or did not receive your ballot, replacement ballots are available. To get a replacement ballot:

- By email: elections@co.douglas.wa.us
- Online: www.VoteWA.gov
- By phone: 509-888-6402 or 509-888-6407
- In person: Douglas County Courthouse
213 S. Rainier St Waterville WA

Returning Your Ballot

Use a Drop Box!

Drop boxes are the best way to ensure your ballot will get to us on time! Drop boxes are securely locked and emptied by teams of two trained election officials.

Boxes are open 24/7 beginning no less than 18 days before the election and closed promptly at 8 p.m. on election night. Drop boxes are the most direct and secure way to return ballots!

Douglas County Drop Box Locations:

Waterville:

Douglas County Courthouse213 S. Rainier St

East Wenatchee:

Public Service Building.....140 19th St. NW

City Hall.....271 9th St. NE

Maintenance Building.....110 2nd St. NE

Bridgeport City Hall.....1206 Columbia Ave.

Mansfield Town Hall26 Main St.

Rock Island City Hall5 N. Garden Ave.

Coulee Dam Town Hall.....300 Lincoln Ave.





Use VoteWA to:

- Register to vote
- Check or update your voter registration information
- View a list of your elected officials
- Contact your county elections office
- View your online voter guide
- Fill out or print a replacement ballot
- Find an official ballot drop box
- Check the status of your ballot

VoteWA is a collaboration between the Office of Secretary of State and all 39 Washington counties to create an advanced, centralized system for both voter registration and election management.

Your Signature Matters!

- Remember to sign and date the declaration on the return envelope with your name printed on it.
- We compare the signature on your ballot envelope with the signature on your voter registration. This is how we know the ballot comes from you.
- How do we get your signature? If you register or update using a paper registration form, we capture the signature on the form. If you register or update through the Department of Motor Vehicles, we capture the signature from your Washington State Driver License.

TOP 4 REASONS A BALLOT CANNOT BE COUNTED

- Ballot received with a late postmark.
- Signature on the ballot envelope doesn't match the signature we have on file.*
- Ballot envelope is not signed.*
- Someone other than the voter has signed the envelope for them.

*If a ballot is not signed or the signature doesn't match the signature on your voter registration, the voter is mailed a form to correct the issue.

Important Dates

Ballots MailedJuly 13, 2021
Ballots Available..... July 16, 2021

Last day to file a write in candidacy

With no filing feeJuly 15, 2021

Last day to register to vote

OnlineJuly 26, 2021
In personAugust 3, 2021

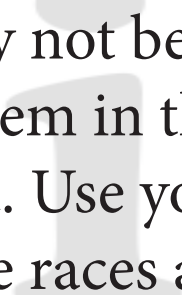
Election DayAugust 3, 2021
Ballots postmarked byAugust 3, 2021
Drop box close @ 8 p.m.August 3, 2021

Douglas County

Certifies the electionAugust 17, 2021

Secretary of State

Certifies the electionAugust 20, 2021



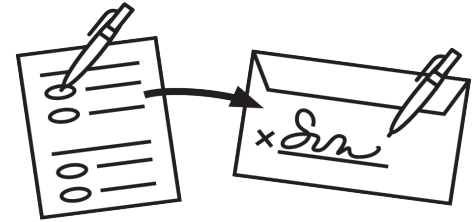
You may not be voting on every item in this voters' pamphlet. Use your ballot to identify the races and measures to review.



Your Voting Rights and Responsibilities:

You have the right to:

- A replacement ballot;
- Accessible voting materials
- Assistance when casting a ballot



You are responsible for:

- Registering by the deadline;
- Updating your residential and/or mailing address
- Returning your ballot by 8 p.m. on Election Day to an official ballot drop box or postmarked by Election Day.

Military or Overseas Voters:

Maintain your voter registration while in the military or living outside the United States. To register, use your home of record (or that of a family member). You may receive your ballot by mail, email, or fax. Contact us for more information.

****No postage needed
when mailing your
ballot.**

United States Post Office
recommends mailing your
ballot one week prior to
Election Day.



Did you know:

- We offer an online version of the voters' pamphlet at www.voteWA.gov
- We have drop boxes in all Douglas County towns.
- There is secure transport for all ballots coming from a drop box to the Douglas County Courthouse in Waterville.
- Washington State is a non-partisan state. You do not have to pick a party when you register.
- The drop box on 2nd St. in East Wenatchee is still being used even though the Law and Justice building has moved.
- Washington State has been a vote by mail state since 2011.
- Votewa.gov provides voters with the ability to check registration, check voting history, see a voter's pamphlet, and more.
- All ballots are handled by teams of two. Ballot officials are never alone with a ballot.
- Election workers are trained by WA State Patrol to identify fraudulent signatures.
- You are not required to vote for every race and measure. Your vote will be counted for the races and measures you do vote on.



Contact Information for Election Related Organizations

Public Disclosure Commission:

View contributors for candidates and measures.
Visit www.pdc.wa.gov or call toll free (877)601-2828

Douglas County Democratic Party:

www.DouglasCountyDems.com
douglascntydemocrats@gmail.com

Douglas County Republican Party:

www.douglascountyrepublicans.org
dcrccemail@gmail.com

Voting Tips

Filling out your ballot:

You may use blue or black ink. You do NOT need to vote for every race.

Signing your envelope:

Don't forget to sign the back of your return envelope so your ballot can be counted!

Returning your ballot:

Mailing your ballot? No stamp needed! USPS recommends dropping your ballot in the mail one week prior to Election Day to make sure it gets postmarked in time to be counted. Ballots must be postmarked by Election Day. You can also return your ballot at one of our ballot drop box locations. Ballot drop boxes close at 8 p.m. on Election Day.



Douglas County Elections Department

Contact Information

PHONE:

509.888.6402

LOCATION:

**213 S. Rainier St
Waterville WA 98858**

MAILING:

**PO Box 853
Waterville WA 98858**

EMAIL:

elections@co.douglas.wa.us

WEBSITE:

www.douglascountywa.net

HOURS:

Monday- Thursday

8:30am- 4:30pm

Open until 8 p.m. on Election Day

Of Note:

****If a primary election was held for an office, the two candidates who received the most votes in the Primary Election advance to the General Election.**

****Each candidate for partisan office may state a political party that he or she prefers. A candidate's preference does not imply that the candidate is nominated or endorsed by the party, or that the party approves of, or associates with that candidate.**

****The election for President and Vice President is different. Candidates for President and Vice President are the official nominees of their political party.**

What voter information is available to the public?

The following information IS public record (see RCW 29A.08.710)

- Name
- Address
- Gender
- Date of Birth
- Elections in which a voter participated
- Date of registration

The following information is NOT public record:

- Social Security Number
- Driver's License number
- Phone number/email address
- Where and how a person registered
- Voter's signature



Notice to Voters

Candidate statements are printed exactly as submitted. We do not make corrections of any kind or verify statements for truth or fact.



CHECK YOUR BALLOT STATUS:

WWW.VOTEWA.GOV

Ballot Status Codes

During an election, track your ballot at www.VoteWA.gov. Ballot status will update as your ballot is received and processed. Please allow 3-5 business days for your ballot to be posted as received.

Ballot Status Categories

Sent - Ballot has been marked as sent by the county (date may be in the future).

Accepted - Signature review has been completed, the voter has been credited with voting, and the ballot is accepted.

Rejection/Challenged + Challenged Reason - Signature/ballot has been challenged. The county election official will contact the voter.

Challenge Reasons:

The status for this code could change during processing.

Hold

Voter returned a previously issued ballot that has been superseded. If the ballot returned is the same ballot style as the current ballot, it will be counted. If different ballot style, the ballot must be held until 7 days after Election Day and then duplicated onto eligible ballot style if the current ballot is not returned.

These challenge codes require action by the voter. The voter will be contacted by the local election officials.

Unsigned Signature Does Not Match ID Required

The voter did not sign the declaration on the outside of the return envelope.
The signature on the return envelope does not match any signature on file.
The voter registration has failed the ID check and must provide ID before the ballot can be counted.

Other than Voter Power of Attorney

The signature on the return envelope does not match any signature on file.
The signature on the return envelope was completed by someone other than the voter and the signer is identified as Power of Attorney. The voter must make a mark (X) and have it witnessed by two people.

Public Hospital District No. 1
Okanogan and Douglas Counties

Proposition No. 1

One-Year Special Levy

The commission of Public Hospital District No. 1, Okanogan and Douglas counties, adopted Resolution No. 2021-07 concerning a proposition to finance and maintain the availability of essential health care services. If approved, this ballot proposition will provide funds to pay for the maintenance, development and expansion of the District's health care facilities and services by levying in 2021 for collection in 2022 a special one-year property tax in the amount of \$840,000, resulting in an estimated levy rate, in excess of the District's regular property tax levy, of 33 cents per \$ 1,000 of assessed value.

Should this proposition be:

Approved

Rejected

Explanatory Statement

Written by Public Hospital District #1 of Okanogan and Douglas County, Washington.

The Commission has determined that it is essential and necessary for the public health, safety and welfare that the District provide additional funds for the maintenance, development and expansion of the District's health care facilities and services.

In order to provide sufficient funds to pay these expenses and thereby meet the needs of its community by maintaining essential health care services, the Commission has determined that it is in the best interests of the residents of the District and other persons served by the District that the District propose a ballot proposition to be voted on by the qualified electors of the District authorizing the District to levy a special one-year excess tax levy in the amount of \$840,000 in 2021 for collection in 2022.

The estimated dollar rate of levy required to produce such amount being 33 cents per \$1,000 of assessed value (such assessed value representing 100% of true and fair value unless specifically provided otherwise by law), in excess of the maximum levy provided by law for public hospital districts without a vote of the electors, the proceeds of the levy to be used if authorized by the Commission of the District through incurring an indebtedness against the District by the issuance of short-term obligations pursuant to chapter 39.50 RCW, pending the receipt of those taxes to provide funds necessary to permit the District to pay its maintenance, development and expansion expenses and thereby meet the needs of its community by maintaining essential health care services.

Arguments For and Against this measure are on next page →

Argument For

Minutes matter. No one knows when a health emergency will strike, but when it does, it is critical to have timely access to emergency care.

For over 70 years, Three Rivers Hospital has provided trained professional staff to meet the healthcare needs of our community. As part of our mission to provide extraordinary service to our community, we are committed to continue staffing our emergency department with experienced physicians dedicated to your care. This has been made possible in part due to the existing tax levy that provides much-needed funding for emergency department operations.

The Emergency Department is open 24 hours per day, 7 days per week, 365 days per year. Quality care is our top priority and having caring ER physicians on our team has allowed us to ensure that quality. We believe the renewal of this one-year levy to be essential and necessary to ensure Three Rivers can continue staffing the Emergency Department with board-certified physicians.

This levy will replace the levy that passed with 71% approval in 2020. The levy rate will remain the same at 33 cents per \$1,000 of assessed property value. This equates to approximately \$66 per year for a home assessed at \$200,000.

Written by

Jennifer Munson

Contact: 509-689-2517 ext 3344

Jmunson@trhospital.net

threerivershospital.net

Argument Against

Statements in favor of and in opposition to a ballot measure are submitted by committees appointed by the jurisdiction. No persons came forward to serve on the committee and to write a statement in opposition. If you would like to be involved with a committee in the future please contact the jurisdiction.

No photo
submitted

Walter

Gomez

(Nonpartisan)

Elected Experience

No Information Submitted

Other Professional Experience

No Information Submitted

Education

No Information Submitted

Community Service

No Information Submitted

Statement

No Information Submitted

Contact

(509) 733-5759

Waltergomezrentals@gmail.com

715 Unit 18

Bridgeport, WA 98813

No photo
submitted

Juan R

Morales

(Nonpartisan)

Elected Experience

No Information Submitted

Other Professional Experience

No Information Submitted

Education

No Information Submitted

Community Service

No Information Submitted

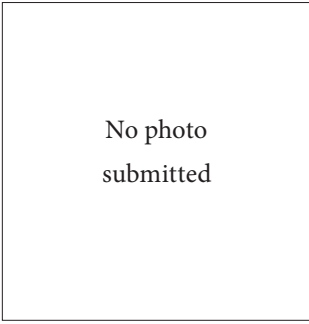
Statement

No Information Submitted

Contact

PO Box 136

Bridgeport, WA 98813



Lorena
Vazquez
(Nonpartisan)

Elected Experience

No Information Submitted

Other Professional Experience

No Information Submitted

Education

No Information Submitted

Community Service

No Information Submitted

Statement

No Information Submitted

Contact

(509) 449-2975

lvazquez80@aol.com

205 Fairview

Bridgeport, WA 98813



Kathy (Katherine)
Corbin
(Nonpartisan)

Elected Experience

Secretary and Vice President of Bridgeport Education Association; President, Bridgeport Junior Women

Other Professional Experience

K-12 Teacher, 26 years Bridgeport School District

Education

AA from Wenatchee Valley College; BA in K-8 Education with endorsement for K-12 Spanish, Central Washington University; 5th Year, California State University-Dominguez Hills; numerous other classes from various educational institutions.

Community Service

Volunteer teacher's aide in the Bridgeport School District for 15 years. As President of Bridgeport Junior Women organized and participated in community Easter Egg Hunts, Thanksgiving and Christmas food and gift baskets; School Bike Rodeos, CPR Classes, and many other activities.

Statement

Having worked in the Bridgeport School District for more that 26 years, I bring a unique perspective to the School Board. During my career I taught at the elementary, middle, and high school levels, and I have extensive experience with special programs, both as a teacher and as a director. I retired from full-time teaching in 2017, and by the end of my career I was teaching high school aged children of my former elementary students. After retirement I substituted until the COVID outbreak. Now I would like to continue my involvement with education through a position on the School Board. As a former teacher I have a good concept of the needs of students and teachers. As a 48-year resident of Bridgeport, I also know the needs of the community and I am bilingual (English-Spanish). What is best for children and their education is my only agenda. I will approach this School board position with an open mind and a willingness to listen to all points of view in order to make the best decisions for children. I would appreciate your vote for the Bridgeport School Board. Corbin for Kids!

Contact

PO Box 702 Bridgeport, WA 98813

No photo
submitted

Rama

Mohr

(Nonpartisan)

Elected Experience

No Information Submitted

Other Professional Experience

No Information Submitted

Education

No Information Submitted

Community Service

No Information Submitted

Statement

No Information Submitted

Contact

(509) 264-1935

MohrRep@outlook.com

301 N June Ave

East Wenatchee, WA 98802

No photo
submitted

Annette

Eggers

(Nonpartisan)

Elected Experience

No Information Submitted

Other Professional Experience

No Information Submitted

Education

No Information Submitted

Community Service

No Information Submitted

Statement

No Information Submitted

Contact

(509) 669-6446

ajeggers@gmail.com

1434 Tedford St SE

East Wenatchee, WA 98802



Jason

Heinz

(Nonpartisan)

Elected Experience

East Wenatchee Events Board

President of Greater Wenatchee Girls Softball Association

President of Apple Valley Softball Association

Other Professional Experience

I have been employed by the US Forest Service the past 23 years, currently serving as the Forest Training Officer for the Okanogan-Wenatchee National Forest.

Education

Wenatchee High School 1998 Graduate

Spokane Community College 2000 Graduate with 3 degrees.

AAS Forestry Management, AAS Wildlife, AAS Parks and Recreation

Community Service

I coach both my daughters in league and travel fastpitch as well as basketball. I spend time getting fields ready, running board meetings, and directing a fastpitch tournament in Wenatchee Valley.

Statement

Serving as a member of the East Wenatchee Events Board, President of Greater Wenatchee Girls Softball Association, and previous President of Men's League Softball as well as Apple Valley Softball Association have all prepared me to be part of the Eastmont School Board. I take holding the position of School Board Member highly and look forward to serving the children, teachers, and administration. We have traversed new territory with academics during the pandemic. Virtual, semi-virtual and lastly going back to in person instruction have all posed challenges and unique conversations. If I am voted in, I will take great pride in my position and will meet all challenges head on. Being with the Forest Service for 23 years in Wildland Fire Management has given me the opportunity to take top level leadership training as well as giving me the ability to make decisions timely and efficiently. A couple of the key issues I see facing the school board are hiring the next School District Superintendent, moving forward after the pandemic, school curriculum, and new school configurations. I look forward to producing results and enhancing relationships as well as bringing renewed energy and enthusiasm to the board.

Contact

PO Box 4206

Wenatchee, WA 98807



Joy

Dawe

(Nonpartisan)

Elected Experience

No Information Submitted

Other Professional Experience

No Information Submitted

Education

Joy Dawe has always placed a high value on education. She graduated from the University of Montana earning her B.A. in Business Administration. She utilized her management skills while working as a Children's Ministry Leader at a large church in Idaho. After having four children, she decided to change careers so she could have a bigger impact on the community, pursuing a career in nursing. She graduated from Big Bend Community College and has been working as an RN at the local hospital since graduation. She is currently working towards her Master's degree in Nursing.

Community Service

No Information Submitted

Statement

Joy Dawe has four children, two of whom have been a part of the Eastmont School District. Her values are faith, family, work, and education. Dawe has always wanted to make an impact on others. She believes the best way to make this happen is to equip others to make positive changes. The focus of Eastmont School District needs to be the learners. The policies and leadership must reflect the importance of academic rigor, critical thinking, and competitiveness in the world market. Ensuring a safe school environment is paramount in achieving this goal, regardless of religion, skin color, or gender. Dawe considers the foundational skills of science, math, and composition as the building blocks of all education and is essential for the success of all students. As a school board member, Dawe will be a strong advocate for our children. Placing your vote for Joy Dawe for Eastmont School District will be a positive move and will have a lasting impact on our community.

Contact

(509) 885-3940

1729 6th St SE

East Wenatchee, WA 98802



John "Stew"

Steward Jr.

(Nonpartisan)

Elected Experience

2017-Present President of the Blueridge Homeowners Association

2012-2014 President of Texas A&M University-Corpus Christi Alumni Association

Other Professional Experience

2014-Present Department of Veteran's Affairs

Education

2007 Bachelor's Degree in Psychology

2010 Master's Degree in Marriage and Family Therapy

2020 Doctor of Philosophy in Counselor Education and Supervision

Community Service

My experience in serving the public began in Jr. High School. I was elected as Vice-President of Student Council, served as Class President multiple years in High School, and Student Council President.

Statement

I am interested in serving on the Eastmont School board for multiple reasons. The public education our children receive is the foundation for all the educational opportunities they will encounter for the remainder of their lives. I want to ensure the educational foundation of the students in East Wenatchee is rewarding academically, artistically, athletically, and spiritually. I have concerns some of the suggested changes in curriculum may originate from a place of true care and compassion, however, is not in the best interest of students. Furthermore, I have concerns taxpayer money is not being honored and used as efficiently as it should be by our school board. Finally, in talking with many friends and neighbors in East Wenatchee, there is a feeling the school board would benefit from having new members with different ideas and points of view.

As a Counselor/Educator I strive to assist students develop the skills they need to be successful in a challenging and ever-changing global market. I want to bring this passion for student's growth to the Eastmont Schoolboard. PLEASE allow me to have your vote on election day.

Contact

(402) 882-5722

iamstew121@gmail.com

<https://www.linkedin.com/in/john-o-steward-jr-ph-d>

No photo
submitted

Dave

Piepel

(Nonpartisan)



Charyl

Baziak

(Nonpartisan)

CANDIDATE HAS WITHDRAWN

Statement of Withdrawal

I have decided that I will not be running for re-election for the Eastmont School Board. I have enjoyed the past 4 years representing District 4. I am thankful for the support and opportunity to represent the community that I grew up in. The Eastmont School District is in good financial shape and our Superintendent Garn Christensen has done a great job. I was honored to serve with a solid Board of Directors during my term. I have enjoyed meeting and listening to many talented students and employees throughout the Eastmont District. I hope all of the students and employees felt appreciated during the past 4 years. It is my hope that our community values, integrity and kindness continue to be modeled and taught throughout all of our schools. We live in a diverse community with many opportunities for our students. With hard work and working side by side, our children, parents and community members will continue to thrive and reach new heights. I'm looking forward to spending more time with my family and supporting my youngest daughter that is currently attending Eastmont High School. Thanks again for the opportunity to serve!

Contact

2740 8th St SE
East Wenatchee, WA 98802

CANDIDATE HAS WITHDRAWN

Statement of Withdrawal

I was informed that there were no conservative board members running for School Board Position #4 and that we really needed a balance on the school board. In good conscience and as an educator I decided to put my name in. Now that there are very qualified candidates I wish to withdraw my candidacy from this race and stand behind someone more qualified than I.

Thank you so much for the opportunity and the experience.

Contact

cbazuak@hotmail.com
1801 Eastmont Ave
East Wenatchee, WA 98802

No photo
submitted

Stephanie

Fuller

(Nonpartisan)

Elected Experience

No Information Submitted

Other Professional Experience

No Information Submitted

Education

No Information Submitted

Community Service

No Information Submitted

Statement

No Information Submitted

Contact

1275 Navarre Coulee Rd
Chelan, WA 98816



Cole

Soreano

(Nonpartisan)

Elected Experience

No Information Submitted

Other Professional Experience

No Information Submitted

Education

A.A. - Construction Technology, Community College of the Air Force

B.A. - Organizational Management, Ashford University

Community Service

No Information Submitted

Statement

For those of you that don't know me, I am a Chelan High School graduate. I am employed with the Chelan County Sheriff's Office and live in Chelan. My wife and I have two kids who currently attend Morgen Owings Elementary.

Since moving back to Chelan over four years ago, I have been an active volunteer. Coaching youth sports, participating in the Santa's Stars program, and organizing a car wash to benefit a local veteran's family are a few of the events that I have participated in. Running for the Lake Chelan School District board member position feels like a natural progression of my desire to continue serving the Chelan community. I have a vested interest in the success of our school district. As a parent and as a law enforcement officer I am met with challenges on a daily basis that require finding creative solutions. I believe my problem-solving skills will be a valuable asset to the school board. I am looking forward to working alongside our superintendent, school district staff, and school board members, to help our future generations succeed.

Contact

(509) 881-0596

robert.soreano@gmail.com

PO Box 2233

Chelan, WA 98816



Brooke

Isaak

(Nonpartisan)

Elected Experience

No Information Submitted

Other Professional Experience

I am a business woman. Early in my career I lived in NYC and worked on Wall Street as a Research Analyst. From there I wanted to experience life out of the corporate world becoming an Entrepreneur. My first business was manufacturing candles and selling to major retailers followed by another business creating and selling aromatherapy products. For 4 years, I was a realtor. Since 2015, I have been the owner and CEO of 3 fast casual restaurants.

Education

Graduated from Manson High School in 1987. Completed a Bachelor's of Business Degree in 1991 from Pacific Lutheran University.

Community Service

Included in Statement.

Statement

Born and raised in the Chelan Valley, I returned here to raise my children in the place I call home. I am passionate about education and the opportunities it provides our children. As a parent of 7 kids through a blended family, I have raised my kids through all levels of education in the Valley. Growing up, I felt supported by my community – an incredible gift that I want every child to experience. I have worked to expand opportunities for our youth from serving as a Program Leader for Thrive Mentoring, Board Member for Teen Talking Circles, and leading the launch of the Lake Chelan Community Center. I will work to have the critical education, mental health, mentorship, and other services our kids need to thrive. I bring 25 years of experience as a parent, business owner, board member, and community leader. These experiences give me a unique perspective to think out of the box, develop creative solutions to new and old problems, and ensure that kids and parents are heard. From day one, I will listen to parents and our youth, work with board members and make school a safe, fun and supportive experience for our children.

Contact

502 S Lakeshore Rd
Chelan, WA 98816



Liliana

Garcia

(Nonpartisan)

Elected Experience

I have been serving as an appointed school board director for the past year and have demonstrated my commitment to those students who are less advantaged, but at the same time, I have given my total support and trust to those who can walk on their own.

Other Professional Experience

I have worked as an Early Childhood Education professional at Inspire Child Development Centers in Quincy and George.

Education

I have an AAS in Early Childhood Education, and I am pursuing a BA in Behavioral Health Science.

Community Service

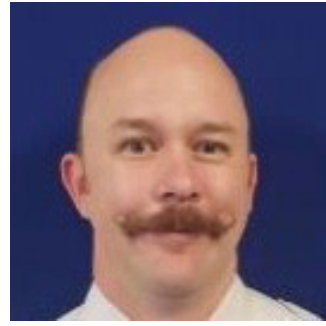
I promote parent engagement in schools and educate families in positive parenting, child development, and early education.

Statement

I am passionate about public education and have two children attending elementary, and middle school in Quincy. Quincy deserves a good representation of cultural and linguistic diversity on the school board to better support our students and families. I will continue pushing community engagement, advocating for early childhood education opportunities, and promoting mental health awareness. For the past year, I have put a strong commitment to learn as much as it was possible by attending trainings and conferences. I feel motivated to implement all my learning to the benefit of student success; one student, one family, and one school at a time. My perspectives are varied and come from being a daughter of immigrant parents, and a former ESL learner, to being a woman and educator who is passionate to serve, and responsibly lead others, by sharing her knowledge, experiences, wisdom, and time. We are better together! Unidos somos mejores!

Contact

1805 6TH AVE SW
QUINCY, WA 98848



Chad

Lower

(Nonpartisan)

Elected Experience

I do not have any previous elected experience, nor did I intend to run for an elected position. However, as a father and concerned member of the community, I am compelled to run for office. My intention is to represent the concerns of parents in the Quincy School District.

Other Professional Experience

Captain at SkyWest Airlines; Flight Instructor at Big Bend Community College; Shift Supervisor at Michael's on the Lake.

Education

University of Washington, Bachelor of Arts in Political Science; Central Washington University, Bachelor of Science in Aviation

Community Service

Wenatchee Apple Blossom Festival

Statement

The school district has outlined their values and expectations for student success in the "Quincy Promise," I want to help the district meet that standard. Public school should be the home of educational fundamentals, with respect to all political affiliations. Last year, sexual education was radically changed at the state level, but the district still controls implementation. This year, in the name of social justice, we are reshaping history and asking our children to cast blame on their peers for the inequities in our society.

This past year we've learned that everything we take for granted as normal can be taken away in an instant. The dynamic conditions of the last year have been tough, and lessons have been learned. Most importantly we learned there isn't a one size fits all solution. If elected I will help Quincy School District fulfill its promise, and ensure it reflects our communities values.

Contact

909 K St SW
Quincy, WA 98848

No photo
submitted

Enrique Henry

Hernandez

(Nonpartisan)

Elected Experience

No Information Submitted

Other Professional Experience

No Information Submitted

Education

No Information Submitted

Community Service

No Information Submitted

Statement

No Information Submitted

Contact

(509) 237-3446

henry_hernandez125@hotmail.com

16188 Road 2 NW

Quincy, WA 98848



Thomas J
Tupling
(Nonpartisan)

Elected Experience

No Information Submitted

Other Professional Experience

I am presently the Development Project Manager for the City of Chelan and have held this position for the past four years.

Education

No Information Submitted

Community Service

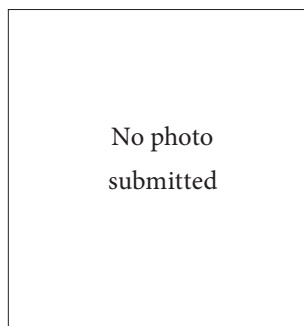
I'm currently a volunteer fire fighter for Douglas County Fire District 5.

Statement

I am a fourth-generation resident of Mansfield. I have always had interest in serving this great community. My goal is to bring common sense back to the table.

Contact

PO Box 141
Mansfield, WA 98830



Kriss
Neff
(Nonpartisan)

Elected Experience

No Information Submitted

Other Professional Experience

No Information Submitted

Education

No Information Submitted

Community Service

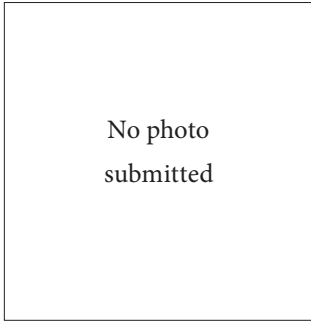
No Information Submitted

Statement

No Information Submitted

Contact

PO Box 223
Mansfield, WA 98830



Gerald

Poole

(Nonpartisan)

Elected Experience

No Information Submitted

Other Professional Experience

No Information Submitted

Education

No Information Submitted

Community Service

No Information Submitted

Statement

No Information Submitted

Contact

PO Box 61

Mansfield, WA 98830



Douglas County Auditor
PO Box 456
Waterville, WA 98858

NONPROFIT ORG.
US Postage
PAID
Waterville WA
Permit No. 21
ECRWSS



RESIDENTIAL CUSTOMER



**Douglas County
Official Local Voters' Pamphlet**

**Primary Election
August 3, 2021**