

**DOUGLAS COUNTY
TRANSPORTATION & LAND SERVICES**

140 19TH STREET NW, SUITE A • EAST WENATCHEE, WA 98802
PHONE: 509-884-7173 • FAX: 509-886-3954
www.douglascountywa.net

**CONTRACT PLANS
Countywide Spot Safety Improvements
Federal Aid No. HSIP-000S(611)
Contract No. TA-7338
CRP 1008**

**FOR INFORMATION REGARDING THIS CONTRACT
PLEASE CONTACT:**

**Douglas County Transportation and Land Services
140 19th St. NW, Suite A
East Wenatchee, WA 98802
509-884-7173**

Construction Plans

COUNTY ROAD PROJECT (CRP) #1008

COUNTYWIDE SPOT SAFETY IMPROVEMENTS

FEDERAL AID PROJECT NUMBER
HSIP - 000S(611)
CONTRACT NO.
TA-7338



08/24/2022

Logan Road #53709 - Township 26N., Range 23E., W.M., Sections 24, 25, and
Township 26N., Range 24E., W.M., Sections 19, 30
Road 15 NW #95150 - Township 27N., Range 24E., W.M., Sections 18, 19
Road C NW #95150 - Township 27N., Range 24E., W.M., Sections 21, 22, 27, 28

IMPROVEMENTS

LOGAN ROAD - SOLAR POWERED FLASHING LED STOP SIGN
ROAD 15 NW - BEAM GUARDRAIL TYPE 31 WITH NON-FLARED TERMINALS
ROAD C NW - CURVE CHEVRONS



August 24, 2022

SHEET INDEX

DOUGLAS COUNTY TRANSPORTATION

C1	(1 of 7)	COVER SHEET
C2	(2 of 7)	VICINITY MAP
C3	(3 of 7)	SUMMARY OF QUANTITIES AND DETAILS
C4	(4 of 7)	SOLAR POWERED FLASHING LED STOP SIGN - SITE PLAN
C5	(5 of 7)	CURVE CHEVRON SIGNS - SITE PLAN
C6	(6 of 7)	BEAM GUARDRAIL TYPE 31 - SITE PLAN
C7	(7 of 7)	TRAFFIC CONTROL PLAN

DOUGLAS COUNTY PERSONNEL

JESSIE KING, P.E. CAPITAL PROGRAMS MANAGER (509) 884-7173 Ext. 6561
DOUG SHIRK, OFFICE ENGINEER (509) 884-7173 Ext. 6586
TY HOWARD, CONSTRUCTION INSPECTOR (509) 630-3567 Ext. 6582
JUSTIN ROOZEN, ENVIRONMENTAL MANAGER (509) 884-7173 Ext. 6573
GREG PETERSON, ENGINEERING DESIGNER (509) 884-7173 Ext. 6540
AARON SIMMONS, P.E. COUNTY ENGINEER (509) 884-7173 Ext. 6547

LEGEND

EXISTING	
	TRAFFIC SIGN
	GUY ANCHOR
	UTILITY POLE
	DOUGLAS COUNTY RIGHT OF WAY
	EDGE OF PAVEMENT
	OVERHEAD POWER
	MAJOR CONTOURS
	MINOR CONTOURS
	ASPHALT
PROPOSED	
	CENTERLINE STATION
	BEAM GUARDRAIL
	SOLAR POWERED FLASHING LED STOP SIGN
	CURVE CHEVRON

UTILITIES

UTILITY	UTILITY NAME	CONTACT	PHONE
POWER	DOUGLAS COUNTY PUD	MIKE SNYDER	(509) 884-7191
TELEPHONE	ZIPLY FIBER, LLC	CHESNA KERN	(509) 859-3710

NOTES

- The existing topographic and physical features shown on these plans are based on a combination of record drawings and field survey from Douglas County, franchise utility company records, and field reconnaissance by the County. The Contractor may encounter variations between actual conditions and those shown on the plans.
- The location of existing underground utilities, including irrigation facilities, are shown in an approximate way only and have not been independently verified by the owner or the Engineer. The Contractor shall determine the exact location of all existing utilities before commencing work, and agrees to be fully responsible for any and all damages which might be occasioned by the Contractor's failure to exactly locate and preserve any and all underground utilities. See the Special Provisions for details regarding irrigation systems and utilities, geotechnical conditions, and hazardous materials.
- No construction related activity shall contribute to the degradation of the environment, allow material to enter surface or ground waters, or allow particulate emissions to the atmosphere, which exceed state or federal standards. Any actions that potentially allow a discharge to state waters must have prior approval of the Washington State Department of Ecology.

COMMISSIONERS

DAN SUTTON (VICE CHAIR) DISTRICT 1
KYLE STEINBURG (MEMBER) DISTRICT 2
MARC S. STRAUB (CHAIR) DISTRICT 3



DATUM
Project Datum NAD 1983/91
Washington Plane Coordinate System,
North Zone U.S. Survey Feet.
Multiply distances by
1.000025886 to convert to ground.
Vertical - NAVD 1988

NO.	REVISION	BY	DATE

PLOT DATE: JUNE 13, 2022
DESIGNER: GTP
DRAWN BY: GTP

**Countywide Spot
Safety Improvements**

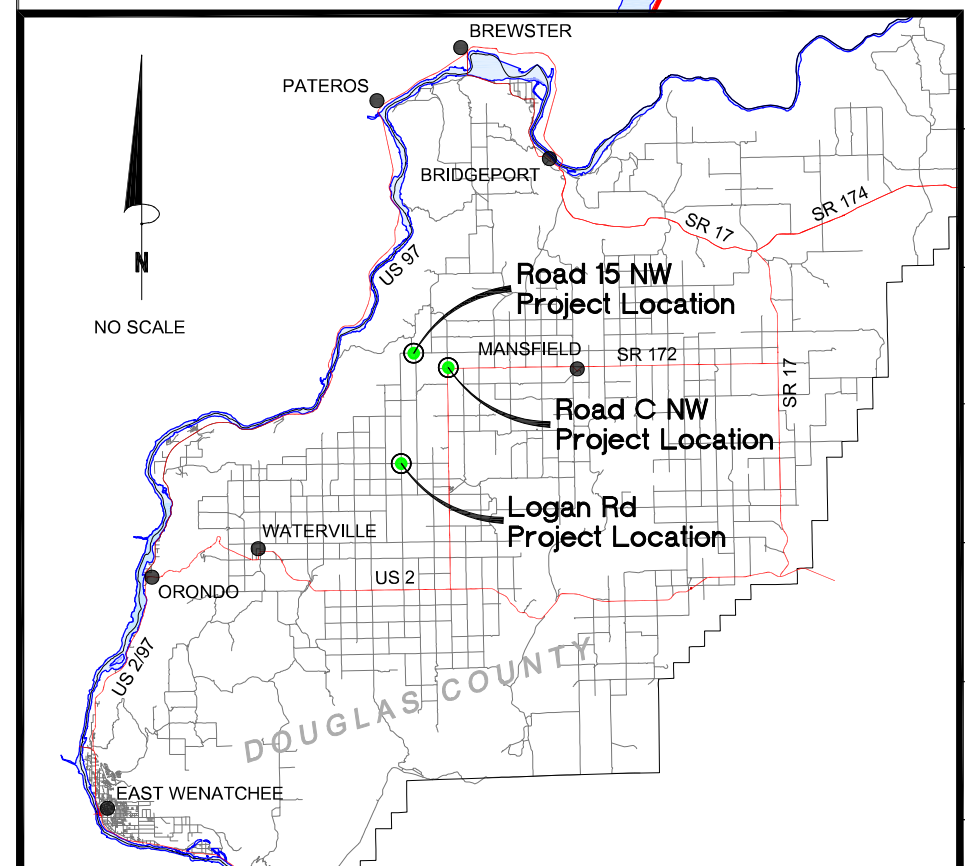
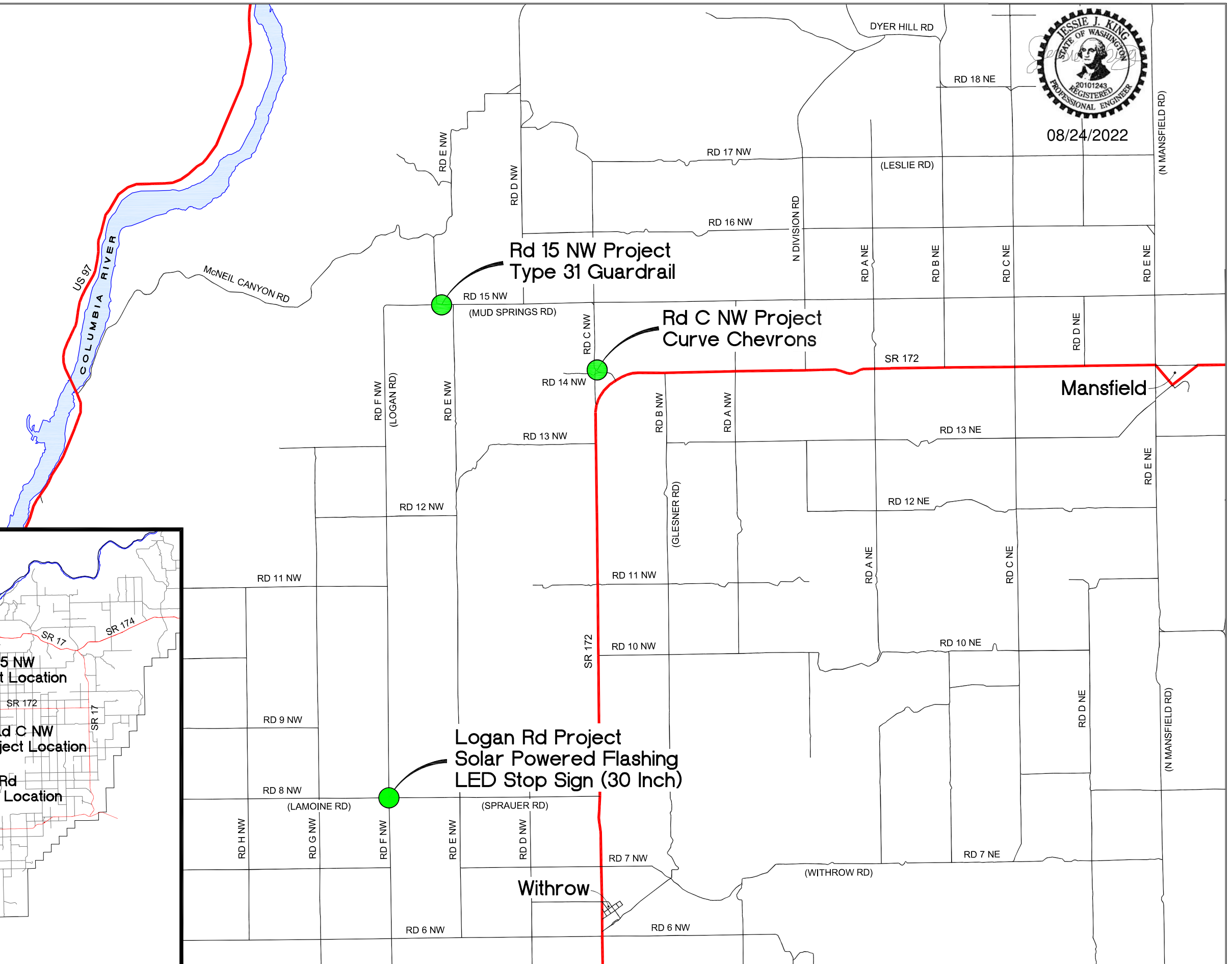


COVER SHEET

DRAWING NAME:
1008_COV
PROJECT NO.
CRP 1008
C1
Sheet 1 of 7



08/24/2022



NO.	REVISION	BY	DATE

PLOT DATE: JUNE 13, 2022
 DESIGNER: GTP
 DRAWN BY: GTP

Countywide Spot Safety Improvements



DOUGLAS COUNTY
 TRANSPORTATION & LAND SERVICES
 140 195 ST. NW Ste. A, E. WENATCHEE, WA 98802 PH: 808.884.7173

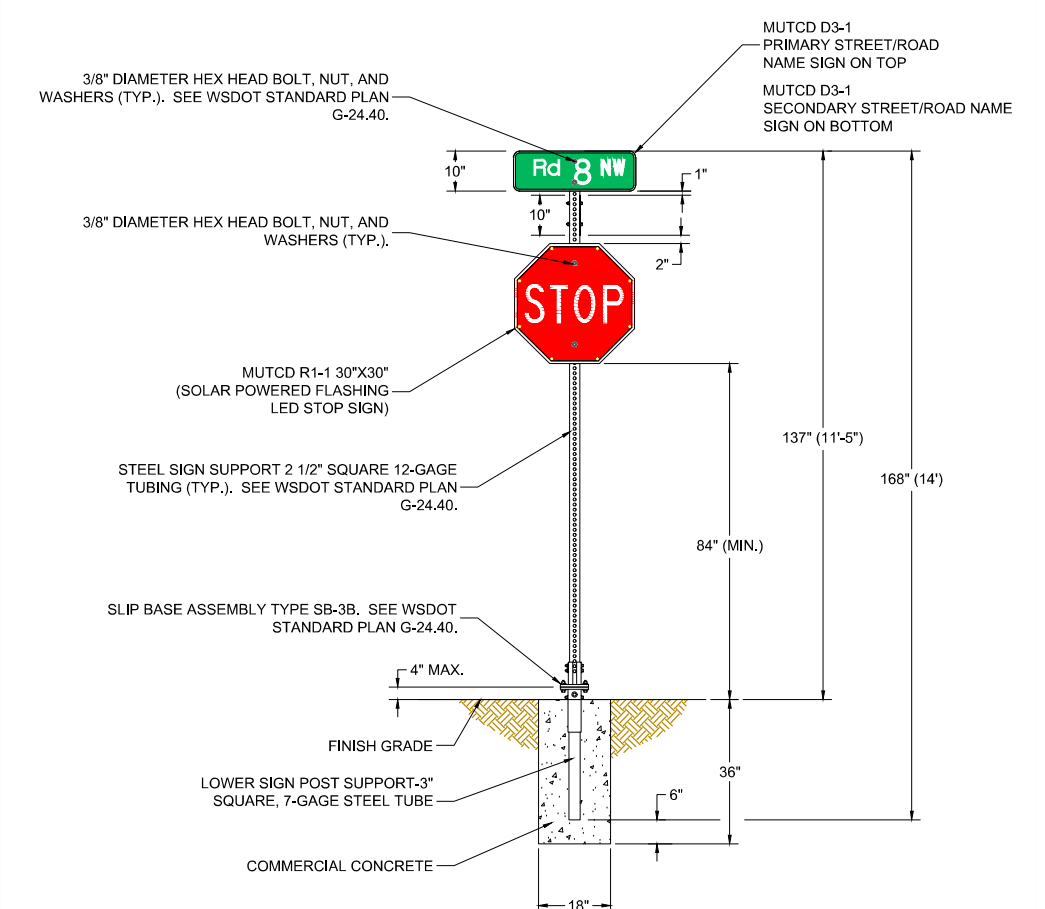
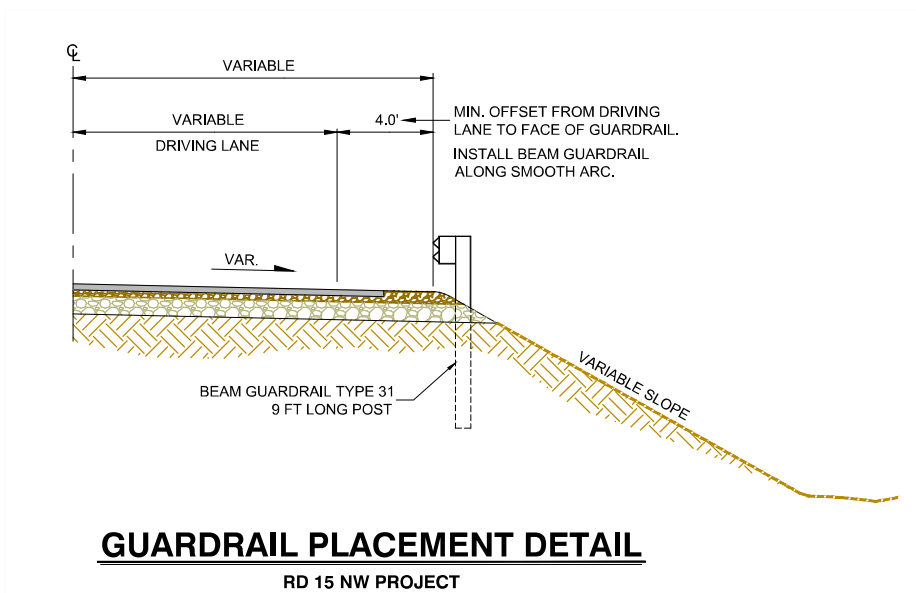
VICINITY MAP

DRAWING NAME: 1008_VICIN
 PROJECT NO. CRP 1008

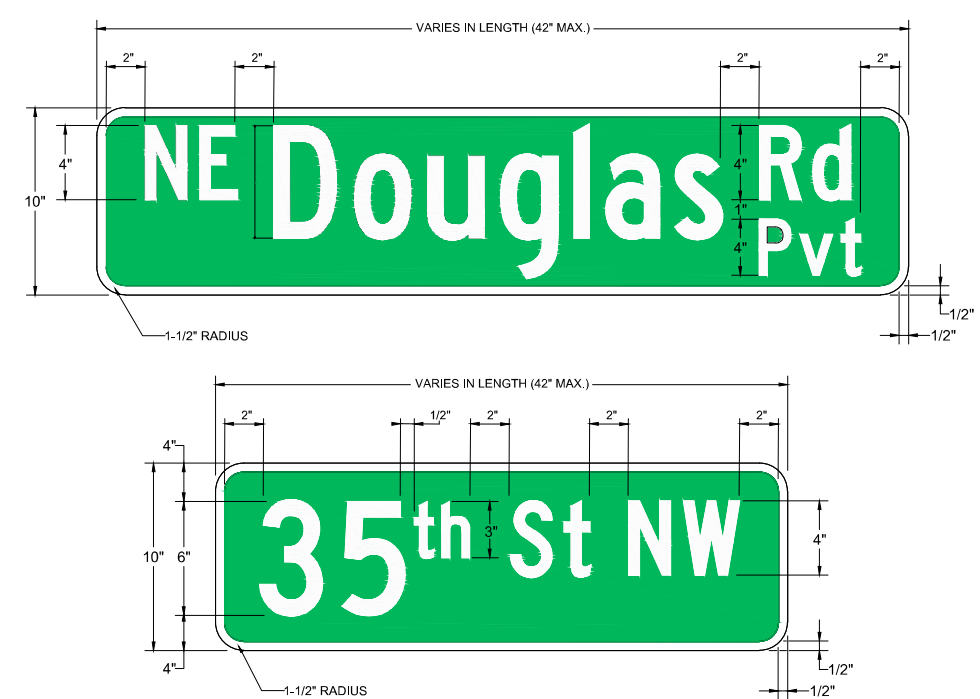


08/24/2022

SUMMARY OF QUANTITIES						
ITEM NO.	TOTAL QUANTITY	SUB-TOTAL SECTION 1-07.2(1) STANDARD SPECS	SUB-TOTAL SECTION 1-07.2(2) STANDARD SPECS	UNIT	ITEM	GROUP 1 DOUGLAS COUNTY
PREPARATION						
1	LUMP SUM	LUMP SUM		L.S.	Mobilization	LUMP SUM
TRAFFIC						
2	700	700		L.F.	Beam Guardrail Type 31 - 9 Ft. Long Post	700
3	4	4		Each	Beam Guardrail Type 31 Non-Flared Terminal	4
4	LUMP SUM	LUMP SUM		L.S.	Permanent Signing	LUMP SUM
5	LUMP SUM	LUMP SUM		L.S.	Solar Powered Flashing LED Stop Sign	LUMP SUM
6	LUMP SUM	LUMP SUM		L.S.	Project Temporary Traffic Control	LUMP SUM
OTHER						
7	LUMP SUM	LUMP SUM		L.S.	SPCC Plan	LUMP SUM



FLASHING LED STOP SIGN DETAIL
LOGAN RD PROJECT



- NOTES:**
1. ALL SIGN RETROREFLECTIVE SHEETING SHALL BE HIGH INTENSITY PRISMATIC (HIP).
 2. SIGN COLOR SHALL BE "GUIDE SIGN" GREEN AND SILVER-WHITE.
 3. ALL STREET SIGNS SHALL BE ALUMINUM WITH A THICKNESS OF 0.080" OR THICKER.
 4. LETTERS SHALL BE "FHWA SERIES C" FONT AS PER THE MANUAL ON UNIFORM TRAFFIC CONTROL DEVICES (MUTCD).
 5. REVISIONS TO THE SIGN STANDARDS MUST BE APPROVED BY COUNTY ENGINEER PRIOR TO CONSTRUCTION.
 6. THE PREFIX SHALL BE ABBREVIATED WITH ALL UPPER CASE LETTERS.
 7. THE STREET NAME SHALL CONSIST OF AN INITIAL UPPER CASE LETTER FOLLOWED BY LOWER CASE LETTERS.
 8. THE SUFFIX SHALL BE ABBREVIATED AND CONSIST OF AN INITIAL UPPER CASE LETTER FOLLOWED BY LOWER CASE LETTERS.
 9. ALL SIGN MATERIALS SHALL CONFORM TO THE CURRENT MUTCD AND WSDOT STANDARD SPECIFICATIONS.

TYPICAL STREET SIGN DETAIL

NO.	REVISION	BY	DATE

PLOT DATE: JUNE 13, 2022
 DESIGNER: GTP
 DRAWN BY: GTP

**Countywide Spot
Safety Improvements**



**SUMMARY OF QUANTITIES
AND DETAILS**

DRAWING NAME:
1008_SUM_DET

PROJECT NO.
CRP 1008

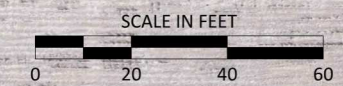
C3

Sheet 3 of 7



08/24/2022

N



NOTES

- SOLAR POWERED FLASHING LED STOP SIGN:**
1. SIGN RETROREFLECTIVE SHEETING SHALL BE DIAMOND GRADE.
 2. SIGN POST SHALL BE 2-1/2" SQUARE 12-GUAGE STEEL TUBE AS PER WSDOT STANDARD PLAN G-24.40. SEE STANDARD PLANS FOR HEIGHT REQUIREMENTS.
 3. SIGNS SHALL BE DIRECTLY SECURED TO POSTS WITH STAINLESS STEEL FASTENERS. NO RIVETING OR BRACKETS PERMITTED.
 4. SIGN SHALL HAVE A SLIP BASE ASSEMBLY TYPE SB-3B AS PER WSDOT STANDARD PLAN G-24.40.
 5. ALL SIGN MOUNTING HARDWARE SHALL BE THEFT DETERRENT.
 6. STEEL SIGN SUPPORT FOUNDATION SHALL BE INSTALLED PER WSDOT STANDARD PLAN G-24.40.
 7. SIGN LOCATION SHALL BE VERIFIED BY ENGINEER PRIOR TO FINAL INSTALLATION.
 8. THE REMOVED STOP SIGN, POST, AND HARDWARE SHALL BE CAREFULLY SALVAGED AND DELIVERED TO THE CONTRACTING AGENCY IN GOOD CONDITION. DELIVER SALVAGED STOP SIGN, POST, AND HARDWARE TO THE CONTRACTING AGENCY WATERVILLE SHOP, 800 N. MONROE, WATERVILLE WA 98858.
 9. REFER TO SIGN DETAILS ON SHEET C3.

RD F NW (LOGAN RD)

SOLAR POWERED FLASHING LED STOP SIGN (30 INCH)
(MP 2.00)
(-119.877775, 47.728694)

RD 8 NW

14 MILES TO WATERVILLE

4.5 MILES TO WITHROW

RD 8 NW

RD F NW

NO.	REVISION	BY	DATE

PLOT DATE: JUNE 13, 2022
DESIGNER: GTP
DRAWN BY: GTP

Countywide Spot Safety Improvements



DOUGLAS COUNTY
TRANSPORTATION & LAND SERVICES
140 19th ST. NW Ste. A, E. WENATCHEE, WA 98802 PH: 509.884.7173

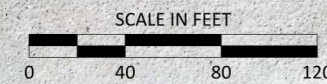
SOLAR POWERED FLASHING LED STOP SIGN SITE PLAN

DRAWING NAME: 1008_SIGNPLN1
PROJECT NO. CRP 1008

C4



08/24/2022



NOTES

CURVE CHEVRONS:

1. SIGN RETROREFLECTIVE SHEETING SHALL BE DIAMOND GRADE.
2. SIGN POSTS SHALL BE 2-1/2" SQUARE 12-GUAGE STEEL TUBE AS PER WSDOT STANDARD PLAN G-24.40. SEE STANDARD PLANS FOR HEIGHT REQUIREMENTS.
3. SIGNS SHALL BE DIRECTLY SECURED TO POSTS WITH STAINLESS STEEL FASTENERS. NO RIVETING PERMITTED.
4. ALL SIGNS SHALL HAVE A SLIP BASE ASSEMBLY TYPE SB-3B AS PER WSDOT STANDARD PLAN G-24.40.
5. ALL SIGN MOUNTING HARDWARE SHALL BE THEFT DETERRENT.
6. ALL STEEL SIGN SUPPORT FOUNDATIONS SHALL BE INSTALLED PER WSDOT STANDARD PLAN G-24-40.
7. SIGN LOCATIONS SHALL BE VERIFIED BY ENGINEER PRIOR TO FINAL INSTALLATION.

W1-8R
18"X24"

W1-8L
18"X24"

W1-8R
18"X24"

CURVE CHEVRONS SPACING
8 SPACES AT 115 FEET O.C.

115'

W1-8L
18"X24"

W1-8R
18"X24"

CURVE CHEVRONS
(MP 11.00-11.20)
(START: -119.813800, 47.817582)
(END: -119.811397, 47.815646)

W1-8L
18"X24"

W1-8R
18"X24"

W1-8L
18"X24"

W1-8R
18"X24"

W1-8L
18"X24"

W1-8R
18"X24"

W1-8L
18"X24"

W1-8R
18"X24"

W1-8L
18"X24"

W1-8L
18"X24"

W1-8R
18"X24"

RD C NW 8.25 MILES TO MANSFIELD

NO.	REVISION	BY	DATE

PLOT DATE: JUNE 13, 2022
 DESIGNER: GTP
 DRAWN BY: GTP

Countywide Spot Safety Improvements



DOUGLAS COUNTY
 TRANSPORTATION & LAND SERVICES
 140 19th ST. NW Ste. A. E. WENATCHEE, WA 98602 PH: 509.884.7173

CURVE CHEVRONS SITE PLAN

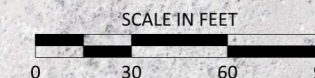
DRAWING NAME:
1008_SIGNPLN2
PROJECT NO.
CRP 1008

C5
Sheet 5 of 7



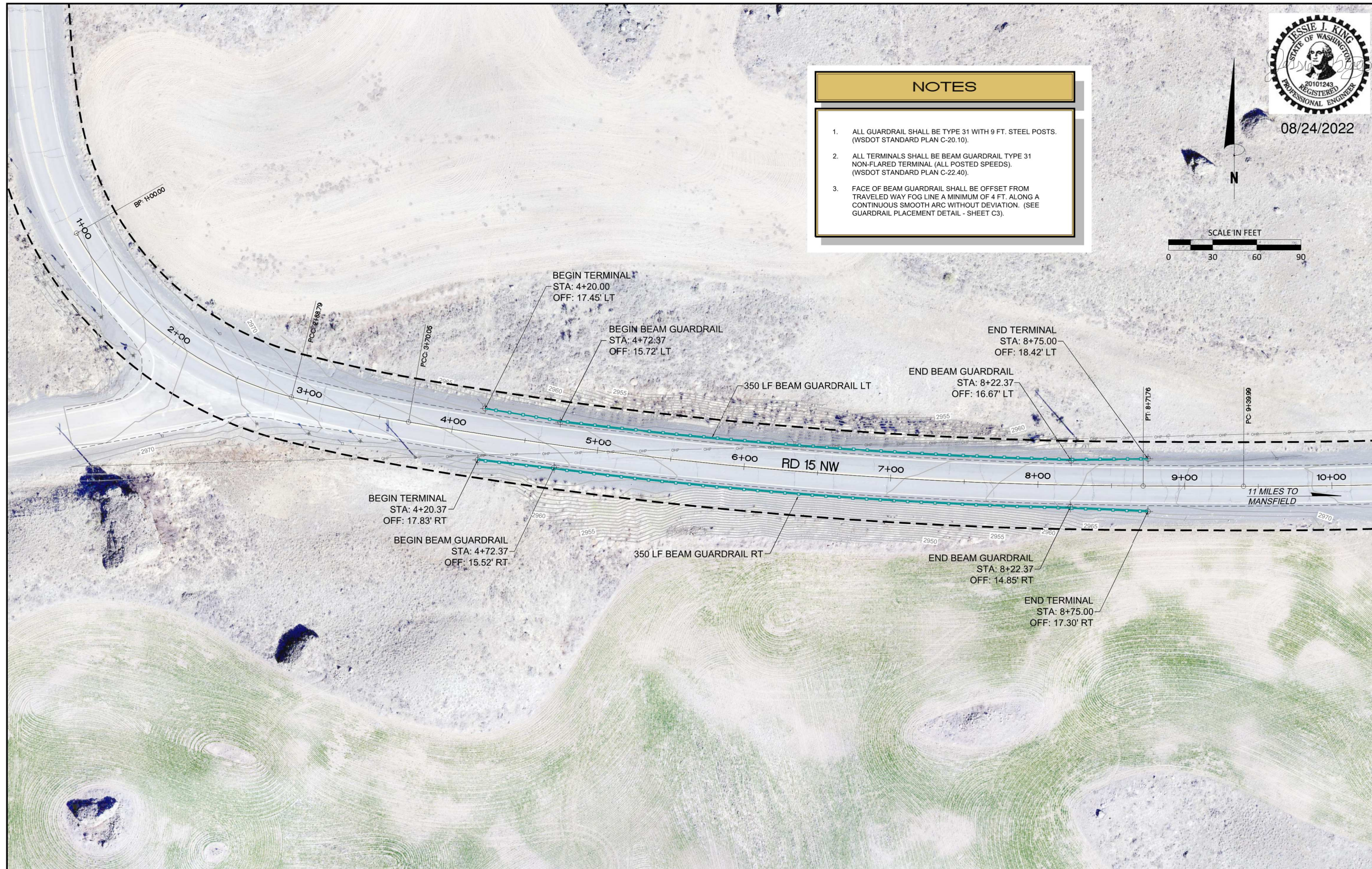
08/24/2022

N



NOTES

1. ALL GUARDRAIL SHALL BE TYPE 31 WITH 9 FT. STEEL POSTS. (WSDOT STANDARD PLAN C-20.10).
2. ALL TERMINALS SHALL BE BEAM GUARDRAIL TYPE 31 NON-FLARED TERMINAL (ALL POSTED SPEEDS). (WSDOT STANDARD PLAN C-22.40).
3. FACE OF BEAM GUARDRAIL SHALL BE OFFSET FROM TRAVELED WAY FOG LINE A MINIMUM OF 4 FT. ALONG A CONTINUOUS SMOOTH ARC WITHOUT DEVIATION. (SEE GUARDRAIL PLACEMENT DETAIL - SHEET C3).



NO.	REVISION	BY	DATE

PLOT DATE: JUNE 13, 2022
 DESIGNER: GTP
 DRAWN BY: GTP

**Countywide Spot
 Safety Improvements**



DOUGLAS COUNTY
 TRANSPORTATION & LAND SERVICES
 140 19th ST. NW Ste. A, E. WENATCHEE, WA 98802 PH: 509.884.7173

**BEAM GUARDRAIL TYPE 31
 SITE PLAN**

DRAWING NAME:
 1008_GUARDPLN
 PROJECT NO.
 CRP 1008

C6
 Sheet 6 of 7

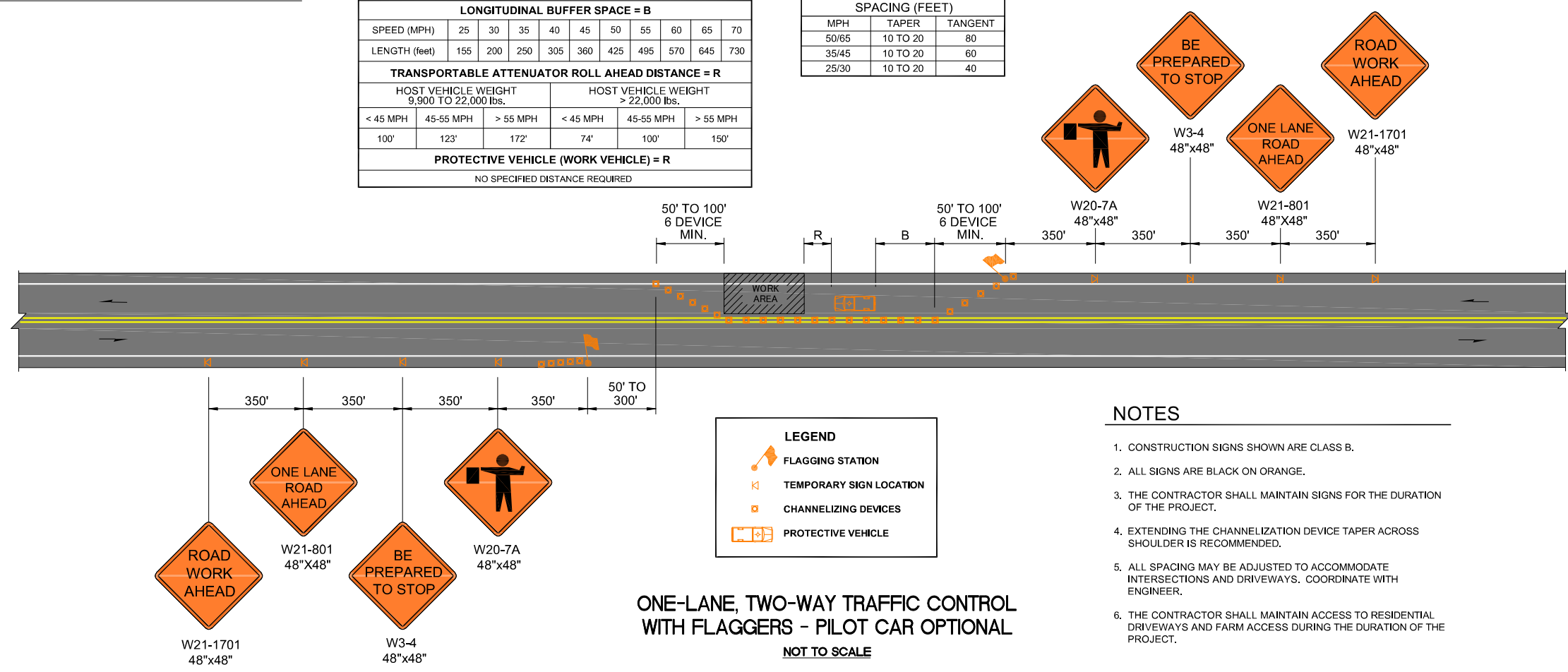


08/24/2022

CONSTRUCTION SIGNS CLASS B

BUFFER DATA										
LONGITUDINAL BUFFER SPACE = B										
SPEED (MPH)	25	30	35	40	45	50	55	60	65	70
LENGTH (feet)	155	200	250	305	360	425	495	570	645	730
TRANSPORTABLE ATTENUATOR ROLL AHEAD DISTANCE = R										
HOST VEHICLE WEIGHT 9,900 TO 22,000 lbs.						HOST VEHICLE WEIGHT > 22,000 lbs.				
< 45 MPH	45-55 MPH	> 55 MPH	< 45 MPH	45-55 MPH	> 55 MPH					
100'	123'	172'	74'	100'	150'					
PROTECTIVE VEHICLE (WORK VEHICLE) = R										
NO SPECIFIED DISTANCE REQUIRED										

CHANNELIZATION DEVICE SPACING (FEET)		
MPH	TAPER	TANGENT
50/65	10 TO 20	80
35/45	10 TO 20	60
25/30	10 TO 20	40



ONE-LANE, TWO-WAY TRAFFIC CONTROL WITH FLAGGERS - PILOT CAR OPTIONAL
NOT TO SCALE

NOTES

1. CONSTRUCTION SIGNS SHOWN ARE CLASS B.
2. ALL SIGNS ARE BLACK ON ORANGE.
3. THE CONTRACTOR SHALL MAINTAIN SIGNS FOR THE DURATION OF THE PROJECT.
4. EXTENDING THE CHANNELIZATION DEVICE TAPER ACROSS SHOULDER IS RECOMMENDED.
5. ALL SPACING MAY BE ADJUSTED TO ACCOMMODATE INTERSECTIONS AND DRIVEWAYS. COORDINATE WITH ENGINEER.
6. THE CONTRACTOR SHALL MAINTAIN ACCESS TO RESIDENTIAL DRIVEWAYS AND FARM ACCESS DURING THE DURATION OF THE PROJECT.

NO.	REVISION	BY	DATE

PLOT DATE: JUNE 13, 2022
 DESIGNER: GTP
 DRAWN BY: GTP

Countywide Spot Safety Improvements

DOUGLAS COUNTY
 TRANSPORTATION & LAND SERVICES
 140 19th St. NW Ste. A, E. WENATCHEE, WA 98802 PH: 509.884.7173

TRAFFIC CONTROL PLAN

DRAWING NAME: 1008_TCP
 PROJECT NO. CRP 1008
C7
 Sheet 7 of 7