

How to vote

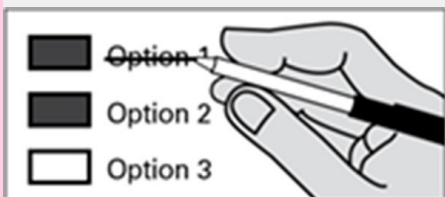
Use a dark blue or black ink pen to completely fill in the box to the left of your choice.

Vote for one response in each race. If you vote for more than one, no votes will be counted for that race.



If you make a mistake

Draw a line through the entire measure response or candidate's name. Then you may make another choice.



Optional write-in

To vote for a candidate not listed for that race, fill in the box to the left of the "Write-in" and print the name of the candidate on the dashed line.

Who donates to campaigns?

View information on financial contributors for federal candidates:

Federal Election Commission
www.fec.gov
Toll Free 1(800) 424-9530

View financial contributors for candidates and measures:

Public Disclosure Commission
www.pdc.wa.gov
Toll Free 1(877) 601-2828

Start Voting Here

Initiative to the People

Initiative Measure No. 2066

Initiative Measure No. 2066 concerns regulating energy services, including natural gas and electrification. This measure would repeal or prohibit certain laws and regulations that discourage natural gas use and/or promote electrification, and require certain utilities and local governments to provide natural gas to eligible customers. Should this measure be enacted into law?

- Yes
- No

Initiatives to the Legislature

Initiative Measure No. 2109

Initiative Measure No. 2109 concerns taxes. This measure would repeal an excise tax imposed on the sale or exchange of certain long-term capital assets by individuals who have annual capital gains of over \$250,000. This measure would decrease funding for K-12 education, higher education, school construction, early learning, and childcare. Should this measure be enacted into law?

- Yes
- No

Initiative Measure No. 2117

Initiative Measure No. 2117 concerns carbon tax credit trading. This measure would prohibit state agencies from imposing any type of carbon tax credit trading, and repeal legislation establishing a cap and invest program to reduce greenhouse gas emissions. This measure would decrease funding for investments in transportation, clean air, renewable energy, conservation, and emissions-reduction. Should this measure be enacted into law?

- Yes
- No

Initiative Measure No. 2124

Initiative Measure No. 2124 concerns state long term care insurance. This measure would provide that employees and self-employed people must elect to keep coverage under RCW 50B.04 and could opt-out any time. It would also repeal a law governing an exemption for employees. This measure would decrease funding for Washington's public insurance program providing long-term care benefits and services. Should this measure be enacted into law?

- Yes
- No

Federal: Partisan Offices

United States President/Vice President

- Kamala D. Harris/Tim Walz
Democratic Party Nominees
- Donald J. Trump/JD Vance
Republican Party Nominees
- Robert F. Kennedy Jr./Nicole Shanahan
We The People Party Nominees
- Jill Stein/Rudolph Ware
Green Party Nominees
- Claudia De la Cruz/Karina Garcia
Socialism and Liberation Party Nominees
- Rachele Fruit/Dennis Richter
Socialist Workers Party Nominees
- Joseph Kishore/Jerry White
Socialist Equality Party Nominees
- Chase Oliver/Mike ter Maat
Libertarian Party Nominees
- Cornel West/Melina Abdullah
Justice For All Party Nominees
- Shiva Ayyadurai/Crystal Ellis
Independent Candidates

Write-in

Read: Each candidate for President and Vice President is the official nominee of a political party. For other partisan offices, each candidate may state a political party that he or she prefers. A candidate's preference does not imply that the candidate is nominated or endorsed by the party, or that the party approves of or associates with that candidate.

United States Senator

- Maria Cantwell
(Prefers Democratic Party)
- Dr Raul Garcia
(Prefers GOP Party)
- _____
Write-in

Congressional District 4
U.S. Representative

- Jerrod Sessler
(Prefers Republican Party)
- Dan Newhouse
(Prefers Republican Party)
- _____
Write-in

Congressional District 8
U.S. Representative

- Kim Schrier
(Prefers Democratic Party)
- Carmen Goers
(Prefers Republican Party)
- _____
Write-in

Continue Voting Other Side -->

State: Partisan Offices

Governor

- Bob Ferguson
(Prefers Democratic Party)
- Dave Reichert
(Prefers Republican Party)
- _____
Write-in

Lt. Governor

- Denny Heck
(Prefers Democratic Party)
- Dan Matthews
(Prefers Republican Party)
- _____
Write-in

Secretary of State

- Steve Hobbs
(Prefers Democratic Party)
- Dale Whitaker
(Prefers Republican Party)
- _____
Write-in

State Treasurer

- Mike Pellicciotti
(Prefers Democratic Party)
- Sharon Hanek
(Prefers Republican Party)
- _____
Write-in

State Auditor

- Pat (Patrice) McCarthy
(Prefers Democratic Party)
- Matt Hawkins
(Prefers Republican Party)
- _____
Write-in

Attorney General

- Pete Serrano
(Prefers Republican Party)
- Nick Brown
(Prefers Democratic Party)
- _____
Write-in

Commissioner of Public Lands

- Jaime Herrera Beutler
(Prefers Republican Party)
- Dave Upthegrove
(Prefers Democratic Party)
- _____
Write-in

State: Nonpartisan Office

Superintendent of Public Instruction

- Chris Reykdal
- David Olson
- _____
Write-in

State: Partisan Office Continued

Insurance Commissioner

- Patty Kuderer
(Prefers Democratic Party)
- Phil Fortunato
(Prefers Republican Party)
- _____
Write-in

Legislative: Partisan Offices

Legislative District 7: State Representative Pos. 1

- Andrew Engell
(Prefers Republican Party)
- Soo Ing-Moody
(Prefers Republican Party)
- _____
Write-in

Legislative District 7: State Representative Pos. 2

- Hunter Abell
(Prefers Republican Party)
- Paul "Rocky" Dean
(Prefers Democratic Party)
- _____
Write-in

Legislative District 13: State Representative Pos. 1

- Tom Dent
(Prefers Republican Party)
- _____
Write-in

Legislative District 13: State Representative Pos. 2

- Alex Ybarra
(Prefers Republican Party)
- _____
Write-in

County: Partisan Offices

County Commissioner 1

- Dan Sutton
(Prefers Republican Party)
- _____
Write-in

County Commissioner 2

- Randy Agnew
(Prefers Republican Party)
- Paula Lamanna
(States No Party Preference)
- _____
Write-in

County: Nonpartisan Office

Public Utility District: Commissioner No. 1

- Matthew Hepner
- Ron Skagen
- _____
Write-in

Judicial: Nonpartisan Office

Supreme Court: Justice Position 2

- Sal Mungia
- Dave Larson
- _____
Write-in

Supreme Court: Justice Position 8

- Steve Gonzalez
- _____
Write-in

Supreme Court: Justice Position 9

- Sheryl Gordon McCloud
- _____
Write-in

Court of Appeals, Division 3, District 3: Judge Position 2

- Rob Lawrence-Berrey
- _____
Write-in

Douglas Superior Court: Judge Position 1

- Brian C. Huber
- _____
Write-in

Hospital District

Public Hospital District No. 1 Okanogan and Douglas Counties

Proposition No. 1

Renewal of One-Year Special Levy

The Commission of Public Hospital District No. 1, Okanogan and Douglas Counties, adopted Resolution No. 2024-04 concerning a proposition to finance and maintain the availability of essential health care services. If approved, this ballot proposition will provide funds to pay for the maintenance, development and expansion of the District's health care facilities and services by levying in 2024 for collection in 2025 a special one-year property tax in the amount of \$1,345,500, resulting in an estimated levy rate, in excess of the District's regular property tax levy, of 33 cents per \$1,000 of assessed value. Should this proposition be:

- Approved
- Rejected

Hospital District #2

Proposition No. 1

Special 1 Year Excess Maintenance and Operations Levy

The Douglas County Hospital District #2 (ambulance services) Board of Commissioners adopted Resolution No. 85 on 17 July 2024, containing a proposition to finance maintenance and operations. This proposition would authorize the District to levy excess taxes upon all taxable property with the District in the sum of \$80,000, requiring collection of approximately \$0.36 per thousand of assessed valuation in 2025. Should this proposition be approved?

- Yes
- No

Continue Voting Next Page

School District

Eastmont School District No. 206

Proposition No. 1

Renewal of Expiring Educational Programs and Operations Levy

The Board of Directors of Eastmont School District No. 206 adopted Resolution No. 2024-05, concerning a proposition for a renewal levy for education. This proposition would authorize the District to levy the following excess taxes, in place of an expiring levy, upon all taxable property within the District, for support of General Fund educational programs and operations expenses not funded by the State of Washington:

Collection Year	Estimated Levy Rate/\$1,000 Assessed Value	Levy Amount
2026	\$1.93	\$16,172,000
2027	\$1.83	\$16,366,000
2028	\$1.83	\$17,393,000
2029	\$1.83	\$18,300,000

all as provided in Resolution No. 2024-05. Should this proposition be approved?

- Levy Yes
- Levy No

Cemetery District

Cemetery District #2

Proposition No. 1

Special 1 Year Excess Maintenance and Operations Levy

The Douglas County Cemetery District #2 Board of Commissioners adopted Resolution No. 2024-002 on 9 July 2024, concerning a proposition for an excess maintenance and operations levy. This proposition would authorize the District to levy excess tax upon all taxable property with the District in the sum of \$50,000, requiring collection of approximately \$0.25 per thousand of assessed valuation in 2025. Should this proposition be approved?

- Yes
- No

This page intentionally left blank